

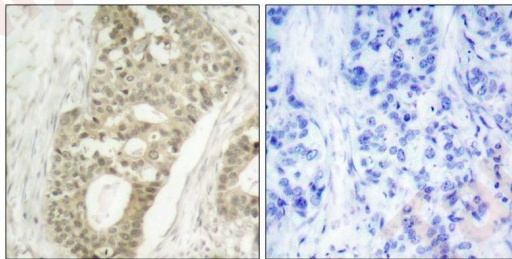
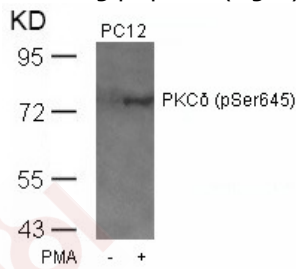
## Anti-Phospho-PRKCD (Ser645) Polyclonal Antibody

### Product Details

Ig Type:	IgG
Reactivity:	Human,Rat
Conjugation:	Unconjugated
Purification:	Antibodies were produced by immunizing rabbits with synthetic phosphopeptide and KLH conjugates. Antibodies were purified by affinity-chromatography using epitope-specific phosphopeptide. Non-phospho specific antibodies were removed by chromatography using non-phosphopeptide.

### Applications

- Verified Activity:
- Western blot analysis of extracts from PC12 cells untreated or treated with PMA using PKC $\delta$  (Phospho-Ser645) Antibody TMAC-03331.
  - Immunohistochemical analysis of paraffin-embedded human breast carcinoma tissue using PKC $\delta$  (Phospho-Ser645) Antibody TMAC-03331 (left) or the same antibody preincubated with blocking peptide (right).



Application: IHC,WB

### Properties

- Stability & Storage: Store at 2°C-8°C for 1 month. Store at -20°C or -80°C for 12 months. Avoid repeated freeze-thaw cycles.
- Shipping: Shipping with blue ice.

### Antigen Details

Immunogen:	Peptide sequence around phosphorylation site of serine 645 (R-L-S(p)-Y-S) derived from Human PKCd
Antigen Species:	human
Uniprot ID:	Q05655
Synonyms:	p-PRKCD (S645);PRKCD (p-Ser645);PRKCD (p-S645);p-PRKCD (Ser645)

---

### Research Background

This is calcium-independent, phospholipid-dependent, serine- and threonine-specific enzyme. PKC is activated by diacylglycerol which in turn phosphorylates a range of cellular proteins. PKC also serves as the receptor for phorbol esters, a class of tumor promoters. May play a role in antigen-dependent control of B-cell function. Phosphorylates MUC1 in the C-terminal and regulates the interaction between MUC1 and beta-catenin.

**Inhibitor · Natural Compounds · Compound Libraries · Recombinant Proteins**

This product is for Research Use Only · Not for Human or Veterinary or Therapeutic Use

Tel:781-999-4286 E\_mail:info@targetmol.com Address:34 Washington Street,Wellesley Hills,MA 02481