

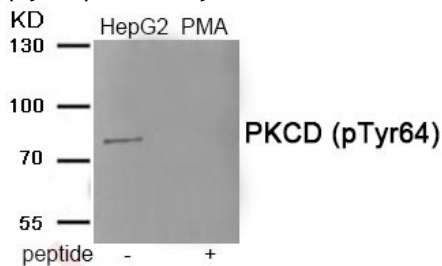
Anti-Phospho-PRKCD (Tyr64) Polyclonal Antibody

Product Details

| | |
|-------------------|--|
| Ig Type: | IgG |
| Reactivity: | Human,Rat |
| Conjugation: | Unconjugated |
| Molecular Weight: | Actual: 78 kDa. |
| Purification: | Antibodies were produced by immunizing rabbits with synthetic phosphopeptide and KLH conjugates. Antibodies were purified by affinity-chromatography using epitope-specific phosphopeptide. Non-phospho specific antibodies were removed by chromatography using non-phosphopeptide. |

Applications

Verified Activity: 1. Western blot analysis of extracts from HepG2 cells treated with PMA using Phospho-PKCD (Tyr64) antibody TMAC-03330. The lane on the right is treated with the antigen-specific peptide.



| | |
|--------------|----------------|
| Application: | WB |
| Recommended | WB: 1:500-1000 |

Properties

| | |
|----------------------|---|
| Stability & Storage: | Store at -20°C or -80°C for 12 months. Avoid repeated freeze-thaw cycles. |
| Shipping: | Shipping with blue ice. |

Antigen Details

| | |
|------------------|--|
| Immunogen: | Peptide sequence around phosphorylation site of Tyrosine 64 (H-I-Y(p)-E-G) derived from Human PKCD |
| Antigen Species: | human |
| Uniprot ID: | Q05655 |
| Synonyms: | PRKCD (p-Tyr64);p-PRKCD (Y64);p-PRKCD (Tyr64);PRKCD (p-Y64) |

Research Background

Calcium-independent, phospholipid- and diacylglycerol (DAG)-dependent serine/threonine-protein kinase that plays contrasting roles in cell death and cell survival by functioning as a pro-apoptotic protein during DNA damage-induced apoptosis, but acting as an apoptotic protein during cytokine receptor-initiated cell death, is involved in tumor suppression as well as survival of several cancers, is required for oxygen radical production by NADPH oxidase and acts as positive or negative regulator in platelet functional responses.

Inhibitor · Natural Compounds · Compound Libraries · Recombinant Proteins

This product is for Research Use Only · Not for Human or Veterinary or Therapeutic Use

Tel:781-999-4286 E_mail:info@targetmol.com Address:34 Washington Street,Wellesley Hills,MA 02481