

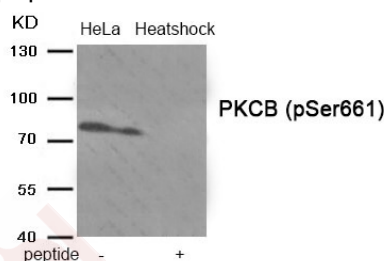
Anti-Phospho-PKC beta (Ser661) Polyclonal Antibody

Product Details

| | |
|-------------------|--|
| Ig Type: | IgG |
| Reactivity: | Human,Mouse,Rat |
| Conjugation: | Unconjugated |
| Molecular Weight: | Actual: 77 kDa. |
| Purification: | Antibodies were produced by immunizing rabbits with synthetic phosphopeptide and KLH conjugates. Antibodies were purified by affinity-chromatography using epitope-specific phosphopeptide. Non-phospho specific antibodies were removed by chromatography using non-phosphopeptide. |

Applications

Verified Activity: 1. Western blot analysis of extracts from HeLa cells treated with Heatshock using Phospho-PKCB (Ser661) antibody TMAC-03328. The lane on the right is treated with the antigen-specific peptide.



| | |
|--------------|----------------|
| Application: | WB |
| Recommended | WB: 1:500-1000 |

Properties

| | |
|----------------------|---|
| Stability & Storage: | Store at -20°C or -80°C for 12 months. Avoid repeated freeze-thaw cycles. |
| Shipping: | Shipping with blue ice. |

Antigen Details

| | |
|------------------|---|
| Immunogen: | Peptide sequence around phosphorylation site of serine 661 (G-F-S(p)-Y-T) derived from Human PKCB |
| Antigen Species: | human |
| Uniprot ID: | P05771 |
| Synonyms: | p-PKC beta (S661);PKC beta (p-Ser661);PKC beta (p-S661);p-PKC beta (Ser661) |

Research Background

Calcium-activated, phospholipid- and diacylglycerol (DAG)-dependent serine/threonine-protein kinase involved in various cellular processes such as regulation of the B-cell receptor (BCR) signalosome, oxidative stress-induced apoptosis, androgen receptor-dependent transcription regulation, insulin signaling and endothelial cells proliferation. Plays a key role in B-cell activation by regulating BCR-induced NF-kappa-B activation. Phosphorylation

A DRUG SCREENING EXPERT

induces CARD11/CARMA1 association with lipid rafts and recruitment of the BCL10-MALT1 complex as well as MAP3K7/TAK1, which then activates IKK complex, resulting in nuclear translocation and activation of NFkB1.

Inhibitor · Natural Compounds · Compound Libraries · Recombinant Proteins

This product is for Research Use Only · Not for Human or Veterinary or Therapeutic Use

Tel:781-999-4286 E_mail:info@targetmol.com Address:34 Washington Street,Wellesley Hills,MA 02481