

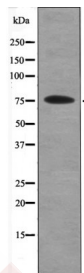
Anti-Phospho-PKC beta (Ser660) Polyclonal Antibody

Product Details

Ig Type:	IgG
Reactivity:	Mouse
Conjugation:	Unconjugated
Molecular Weight:	Theoretical: 76 kDa.
Purification:	Antibodies were produced by immunizing rabbits with synthetic phosphopeptide and KLH conjugates. Antibodies were purified by affinity-chromatography using epitope-specific phosphopeptide. Non-phospho specific antibodies were removed by chromatography using non-phosphopeptide.

Applications

Verified Activity: 1. Western blot analysis PKC β (Phospho-Ser660) using HepG2 whole cell lysates.



Application:	WB
Recommended	WB: 1:1000

Properties

Stability & Storage:	Store at -20°C or -80°C for 12 months. Avoid repeated freeze-thaw cycles.
Shipping:	Shipping with blue ice.

Antigen Details

Immunogen:	A synthesized phosphopeptide: human PKC β around the phosphorylation site of Ser660
Antigen Species:	human
Uniprot ID:	P68404
Synonyms:	PKC beta (p-S660);p-PKC beta (S660);p-PKC beta (Ser660);PKC beta (p-Ser660)

Inhibitor · Natural Compounds · Compound Libraries · Recombinant Proteins

This product is for Research Use Only. Not for Human or Veterinary or Therapeutic Use

Tel:781-999-4286 E_mail:info@targetmol.com Address:34 Washington Street,Wellesley Hills,MA 02481