

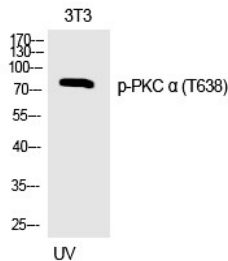
Anti-Phospho-PRKCA (Thr638) Polyclonal Antibody

Product Details

Ig Type:	IgG
Reactivity:	Human,Mouse,Rat
Conjugation:	Unconjugated
Molecular Weight:	Actual: 76 kDa.
Purification:	The antibody was affinity-purified from rabbit antiserum by affinity-chromatography using epitope-specific immunogen.

Applications

Verified Activity: 1. Western Blot analysis of 3T3 cells using Phospho-PKC α (T638) Polyclonal Antibody.



Application:	ELISA,IHC,WB
Recommended	WB: 1:500-2000; IHC: 1:100-300; ELISA: 1:20000

Properties

Stability & Storage:	Store at -20°C or -80°C for 12 months. Avoid repeated freeze-thaw cycles.
Shipping:	Shipping with blue ice.

Antigen Details

Immunogen:	A synthesized phosphopeptide: human PKC α around the phosphorylation site of T638
Antigen Species:	human
Uniprot ID:	P17252
Synonyms:	PKCD;Protein kinase C delta;Protein kinase C;PKC2;PRKCZ;PKC epsilon;PRKCB1;PKC-alpha;PRKCA;Protein kinase C zeta;PKC alpha;PRKCD;p-PRKCA (T638);Protein kinase C alpha;PRKCA (p-T638);PRKCE;PRKCA (p-Thr638);PRKCB2;PKC-A;PKCG;PKC gamma;PKC beta;PKCE;Protein kinase C beta;PKCA;PRKCB;PRKCG;KPCA_HUMAN;Protein kinase C epsilon;Protein kinase C gamma;PKC delta;Phospho-PRKCA (T638);p-PRKCA (Thr638);PKCB;PKC zeta

Inhibitor · Natural Compounds · Compound Libraries · Recombinant Proteins

This product is for Research Use Only. Not for Human or Veterinary or Therapeutic Use

Tel:781-999-4286 E_mail:info@targetmol.com Address:34 Washington Street,Wellesley Hills,MA 02481