

Anti-Phospho-PKC iota/PRKCZ (Thr412/410) Polyclonal Antibody

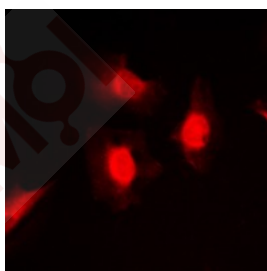
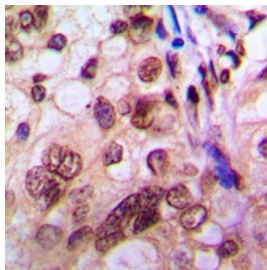
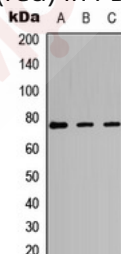
Product Details

Ig Type:	IgG
Reactivity:	Human,Mouse,Rat
Conjugation:	Unconjugated
Molecular Weight:	Theoretical: 78 kDa.
Purification:	The antibody was purified by immunogen affinity chromatography.

Applications

Verified Activity:

1. Western blot analysis of PKC iota/zeta (phospho-Thr412/410) expression in MCF7 TNFa-treated, NIH3T3 LPS-treated, PC12 UV-treated whole cell lysates.
2. Immunohistochemical analysis of PKC iota/zeta (phospho-Thr412/410) staining in human breast cancer formalin fixed paraffin embedded tissue section. The section was then incubated with the antibody at room temperature and detected using an HRP conjugated compact polymer system. DAB was used as the chromogen. The section was then counterstained with haematoxylin and mounted with DPX.
3. Immunofluorescent analysis of PKC iota/zeta (phospho-Thr412/410) staining in MCF7 cells. Formalin-fixed cells were permeabilized with 0.1% Triton X-100 in TBS for 5-10 minutes and blocked with 3% BSA-PBS for 30 minutes at room temperature. Cells were probed with the primary antibody in 3% BSA-PBS and incubated overnight at 4 C in a humidified chamber. Cells were washed with PBST and incubated with a DyLight 594-conjugated secondary antibody (red) in PBS at room temperature in the dark.



A DRUG SCREENING EXPERT

Application: IF,IHC,WB

Recommended WB: 1:500-1000; IHC: 1:50-100; IF:1:100-300

Properties

Stability & Storage: Store at -20°C or -80°C for 12 months. Avoid repeated freeze-thaw cycles.

Shipping: Shipping with blue ice.

Antigen Details

Immunogen: KLH conjugated synthetic peptide: encompassing a sequence within the center region of human PKC iota/zeta

Antigen Species: human

Uniprot ID: P41743

Synonyms: p-PKC iota/PRKCZ (Thr412/410);PKC iota/PRKCZ (p-Thr412/410);p-PKC iota/PRKCZ (T412/410); PKC iota/PRKCZ (p-T412/410)

Inhibitor · Natural Compounds · Compound Libraries · Recombinant Proteins

This product is for Research Use Only. Not for Human or Veterinary or Therapeutic Use

Tel:781-999-4286 E_mail:info@targetmol.com Address:34 Washington Street,Wellesley Hills,MA 02481