

## Anti-PKC gamma Antibody (9I127)

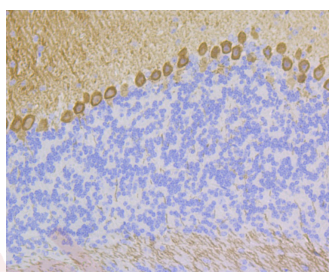
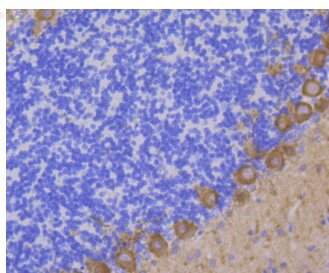
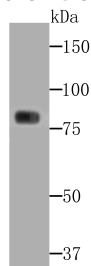
### Product Details

Ig Type:	IgG
Reactivity:	Human,Mouse,Rat
Conjugation:	Unconjugated
Molecular Weight:	Theoretical: 78 kDa.
Clone:	9I127
Purification:	ProA affinity purified

### Applications

#### Verified Activity:

1. Western blot analysis of PKC gamma on A549 cell lysates using anti-PKC gamma antibody at 1/1,000 dilution.
2. Immunohistochemical analysis of paraffin-embedded rat cerebellum tissue using anti-PKC gamma antibody. Counter stained with hematoxylin.
3. Immunohistochemical analysis of paraffin-embedded mouse cerebellum tissue using anti-PKC gamma antibody. Counter stained with hematoxylin.



Application:	IHC,WB
Recommended	WB: 1:500-2000; IHC: 1:50-200

**Properties**

Stability & Storage: Store at -20°C or -80°C for 12 months. Avoid repeated freeze-thaw cycles.

Shipping: Shipping with blue ice.

---

**Antigen Details**

Immunogen: A synthesized peptide: within Human PKC gamma aa 350-450

Antigen Species: human

Uniprot ID: P05129

Synonyms: PKCg;PKCy;MGC57564;Protein kinase C gamma;OTTHUMP00000067291;SCA14;PKC γ;PKCC;  
Protein kinase C gamma type;Protein kinase C gamma polypeptide;Protein kinase C, gamma;  
PKCgamma;KPCG\_HUMAN;PRKCG;PKC g;SCA 14

**Inhibitor · Natural Compounds · Compound Libraries · Recombinant Proteins**

This product is for Research Use Only · Not for Human or Veterinary or Therapeutic Use

Tel:781-999-4286 E\_mail:info@targetmol.com Address:34 Washington Street,Wellesley Hills,MA 02481