

Anti-PRKCD Antibody (8E672)

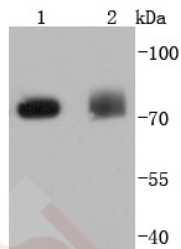
Product Details

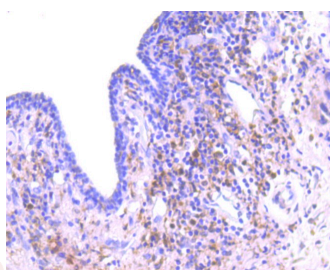
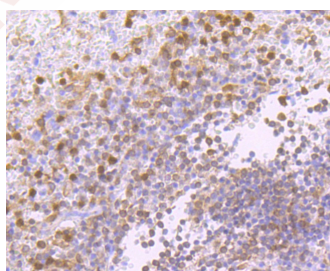
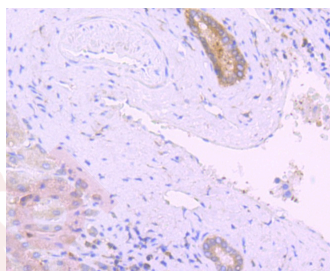
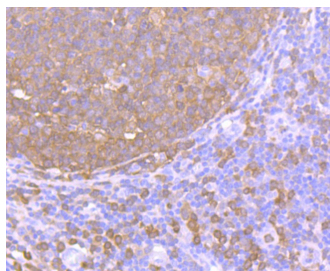
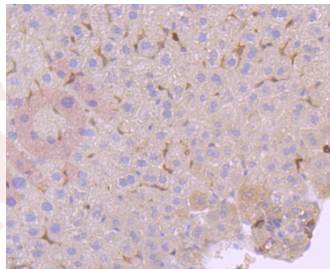
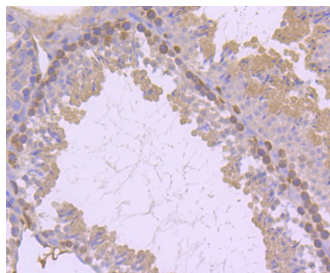
Ig Type:	IgG
Reactivity:	Human,Mouse,Rat
Conjugation:	Unconjugated
Molecular Weight:	Theoretical: 78 kDa.
Clone:	8E672
Purification:	ProA affinity purified

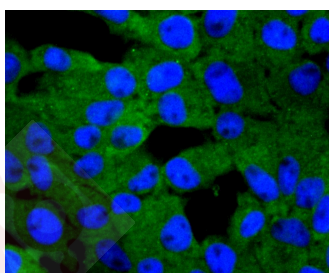
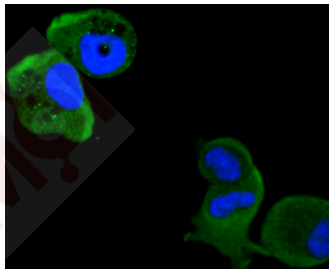
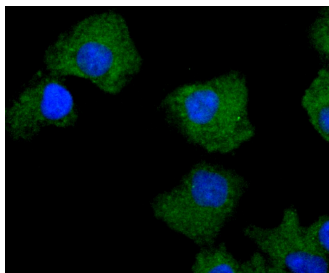
Applications

1. Western blot analysis of PKC delta on different lysates using anti-PKC delta antibody at 1/1,000 dilution. Positive control: Lane 1: Hela, Lane 2: NIH/3T3.
2. Immunohistochemical analysis of paraffin-embedded mouse testis tissue using anti-PKC delta antibody. Counter stained with hematoxylin.
3. Immunohistochemical analysis of paraffin-embedded mouse liver tissue using anti-PKC delta antibody. Counter stained with hematoxylin.
4. Immunohistochemical analysis of paraffin-embedded human tonsil tissue using anti-PKC delta antibody. Counter stained with hematoxylin.
5. Immunohistochemical analysis of paraffin-embedded human liver tissue using anti-PKC delta antibody. Counter stained with hematoxylin.
6. Immunohistochemical analysis of paraffin-embedded human spleen tissue using anti-PKC delta antibody. Counter stained with hematoxylin.
7. Immunohistochemical analysis of paraffin-embedded human breast carcinoma tissue using anti-PKC delta antibody. Counter stained with hematoxylin.
8. ICC staining PKC delta in A549 cells (green). The nuclear counter stain is DAPI (blue). Cells were fixed in paraformaldehyde, permeabilised with 0.25% Triton X100/PBS.
9. ICC staining PKC delta in MCF-7 cells (green). The nuclear counter stain is DAPI (blue). Cells were fixed in paraformaldehyde, permeabilised with 0.25% Triton X100/PBS.
10. ICC staining PKC delta in HepG2 cells (green). The nuclear counter stain is DAPI (blue). Cells were fixed in paraformaldehyde, permeabilised with 0.25% Triton X100/PBS.
11. ICC staining PKC delta in RH-35 cells (green). The nuclear counter stain is DAPI (blue). Cells were fixed in paraformaldehyde, permeabilised with 0.25% Triton X100/PBS.

Verified Activity:







Application: ICC/IF,IHC,WB

Recommended WB: 1:1000-2000; IHC: 1:50-200; ICC/IF: 1:50-200

Properties

Stability & Storage: Store at -20°C or -80°C for 12 months. Avoid repeated freeze-thaw cycles.

Shipping: Shipping with blue ice.

Antigen Details

Immunogen: Recombinant Protein

Uniprot ID: Q05655

Synonyms: PKCD;nPKC-delta;PRKCD;Tyrosine-protein kinase PRKCD;Protein kinase C delta type

Research Background

Members of the protein kinase C (PKC) family play a key regulatory role in a variety of cellular functions, including cell growth and differentiation, gene expression, hormone secretion and membrane function. PKCs were originally identified as serine/threonine protein kinases whose activity was dependent on calcium and phospholipids. Diacylglycerols (DAG) and tumor promoting phorbol esters bind to and activate PKC. PKCs can be subdivided into at least two major classes, including conventional (c) PKC isoforms (α , β I, β II and γ) and novel (n) PKC isoforms (δ , ϵ , ζ ,

η, θ, λ/ι, μ and ν). Patterns of expression for each PKC isoform differ among tissues and PKC family members exhibit clear differences in their cofactor dependencies. For instance, the kinase activities of PKC δ and ε are independent of Ca²⁺. On the other hand, most of the other PKC members possess phorbol ester-binding activities and kinase activities.

Inhibitor · Natural Compounds · Compound Libraries · Recombinant Proteins

This product is for Research Use Only· Not for Human or Veterinary or Therapeutic Use

Tel:781-999-4286 E_mail:info@targetmol.com Address:34 Washington Street,Wellesley Hills,MA 02481