

Anti-PRKCA Antibody (6S104)

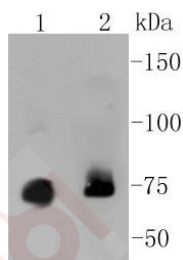
Product Details

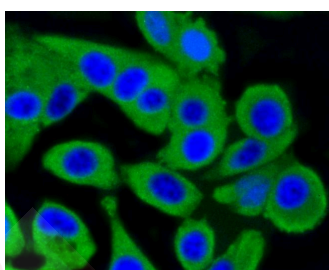
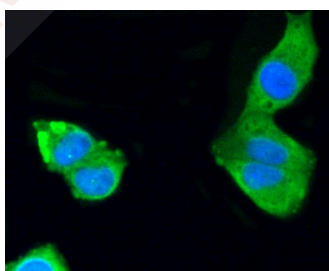
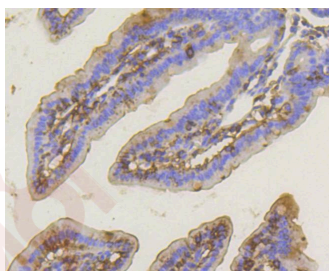
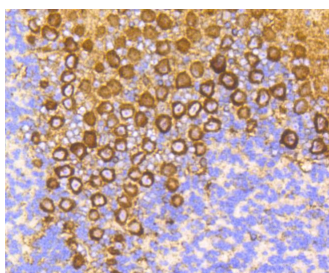
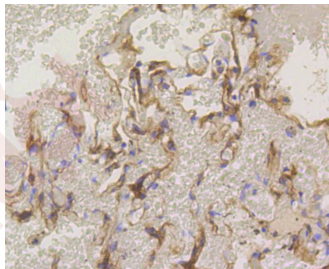
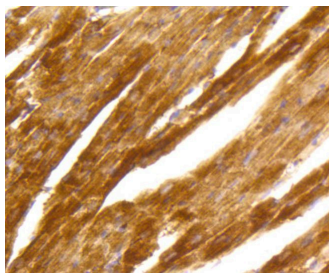
Ig Type:	IgG
Reactivity:	Human,Mouse,Rat
Conjugation:	Unconjugated
Molecular Weight:	Theoretical: 75 kDa.
Clone:	6S104
Purification:	ProA affinity purified

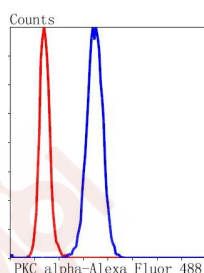
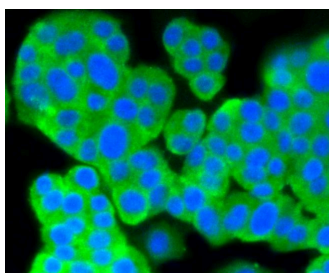
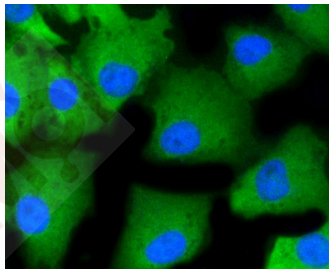
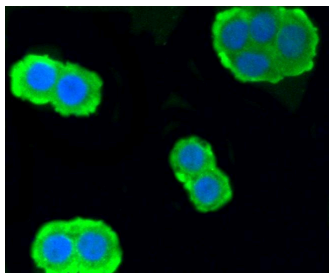
Applications

1. Western blot analysis of PKC alpha on different lysates using anti-PKC alpha antibody at 1/1,000 dilution. Positive control: Lane 1: K562, Lane 2: 293.
2. Immunohistochemical analysis of paraffin-embedded mouse heart tissue using anti-PKC alpha antibody. Counter stained with hematoxylin.
3. Immunohistochemical analysis of paraffin-embedded human lung tissue using anti-PKC alpha antibody. Counter stained with hematoxylin.
4. Immunohistochemical analysis of paraffin-embedded mouse brain tissue using anti-PKC alpha antibody. Counter stained with hematoxylin.
5. Immunohistochemical analysis of paraffin-embedded mouse small intestine tissue using anti-PKC alpha antibody. Counter stained with hematoxylin.
6. ICC staining PKC alpha in Hela cells (green). The nuclear counter stain is DAPI (blue). Cells were fixed in paraformaldehyde, permeabilised with 0.25% Triton X100/PBS.
7. ICC staining PKC alpha in MCF-7 cells (green). The nuclear counter stain is DAPI (blue). Cells were fixed in paraformaldehyde, permeabilised with 0.25% Triton X100/PBS.
8. ICC staining PKC alpha in CRC cells (green). The nuclear counter stain is DAPI (blue). Cells were fixed in paraformaldehyde, permeabilised with 0.25% Triton X100/PBS.
9. ICC staining PKC alpha in A549 cells (green). The nuclear counter stain is DAPI (blue). Cells were fixed in paraformaldehyde, permeabilised with 0.25% Triton X100/PBS.
10. ICC staining PKC alpha in PC12 cells (green). The nuclear counter stain is DAPI (blue). Cells were fixed in paraformaldehyde, permeabilised with 0.25% Triton X100/PBS.
11. Flow cytometric analysis of Hela cells with PKC alpha antibody at 1/50 dilution (blue) compared with an unlabelled control (cells without incubation with primary antibody; red). Alexa Fluor 488-conjugated goat anti rabbit IgG was used as the secondary antibody.

Verified Activity:







Application: FCM, ICC/IF, IHC, IP, WB

Recommended WB: 1:1000-2000; IHC: 1:50-200; ICC/IF: 1:50-200; IP: 1:10-50; FCM: 1:50-100

Properties

Stability & Storage: Store at -20°C or -80°C for 12 months. Avoid repeated freeze-thaw cycles.

Shipping: Shipping with blue ice.

Antigen Details

Immunogen: Recombinant Protein

Uniprot ID: P17252

Synonyms: PKC-A; PRKCB1; PKC delta; PKC alpha; PKCE; PKCB; PRKCA; PRKCD; PKC epsilon; PKC2; PRKCE; Protein kinase C epsilon; Protein kinase C; Protein kinase C delta; PRKCG; PRK CZ; Protein kinase C gamma; PRKCB; KPCA_HUMAN; PKC gamma; PRKCB2; PKC-alpha; Protein kinase C beta; PKC zeta; PKC beta; PKCG; PKCD; PKCA; Protein kinase C zeta; Protein kinase C alpha

Research Background

Members of the protein kinase C (PKC) family play a key regulatory role in a variety of cellular functions including cell growth and differentiation, gene expression, hormone secretion and membrane function. PKCs were originally identified as serine/threonine protein kinases whose activity was dependent on calcium and phospholipids. Diacylglycerols (DAG) and tumor-promoting phorbol esters bind to and activate PKC. PKCs can be subdivided into many different isoforms. Patterns of expression for each PKC isoform differ among tissues and PKC family members exhibit clear differences in their cofactor dependencies. For instance, the kinase activities of PKC and ?? are independent of Ca²⁺. On the other hand, most of the other PKC members possess phorbol ester-binding activities and kinase activities.

Inhibitor · Natural Compounds · Compound Libraries · Recombinant Proteins

This product is for Research Use Only · Not for Human or Veterinary or Therapeutic Use

Tel:781-999-4286 E_mail:info@targetmol.com Address:34 Washington Street,Wellesley Hills,MA 02481