

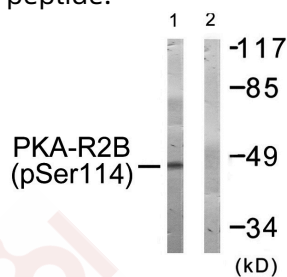
Anti-Phospho-PKA-R2 $\beta$  (Ser114) Polyclonal Antibody

## Product Details

Ig Type:	IgG
Reactivity:	Human,Mouse,Rat
Conjugation:	Unconjugated
Molecular Weight:	Actual: 46 kDa.
Purification:	Antibodies were produced by immunizing rabbits with synthetic phosphopeptide and KLH conjugates. Antibodies were purified by affinity-chromatography using epitope-specific phosphopeptide. Non-phospho specific antibodies were removed by chromatography using non-phosphopeptide.

## Applications

Verified Activity: 1. Western blot analysis of extracts from COS-7 cells treated with PMA using PKA-R2 $\beta$  (Phospho-Ser114) Antibody TMAC-03309. The lane on the right is treated with the antigen-specific peptide.



Application:	WB
Recommended	WB: 1:500-1000

## Properties

Stability & Storage:	Store at -20°C or -80°C for 12 months. Avoid repeated freeze-thaw cycles.
Shipping:	Shipping with blue ice.

## Antigen Details

Immunogen:	Peptide sequence around phosphorylation site of Serine114(R-A-S(p)-V-C) derived from Human PKA-R2 $\beta$
Antigen Species:	human
Uniprot ID:	P31323
Synonyms:	PKA-R2 $\beta$ (p-Ser114);p-PKA-R2 $\beta$ (Ser114);PKA-R2 $\beta$ (p-S114);p-PKA-R2 $\beta$ (S114)

## Research Background

Regulatory subunit of the cAMP-dependent protein kinases involved in cAMP signaling in cells. Type II regulatory chains mediate membrane association by binding to anchoring proteins, including the MAP2 kinase.

**Inhibitor · Natural Compounds · Compound Libraries · Recombinant Proteins**

This product is for Research Use Only · Not for Human or Veterinary or Therapeutic Use

Tel:781-999-4286 E\_mail:info@targetmol.com Address:34 Washington Street,Wellesley Hills,MA 02481