

Anti-PIM1 Antibody (6F773)

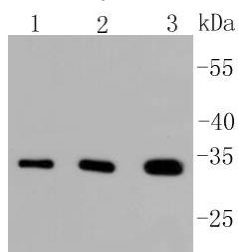
Product Details

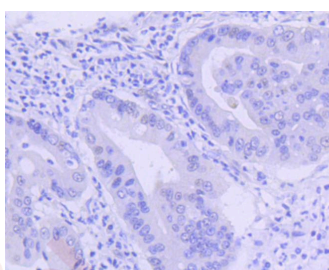
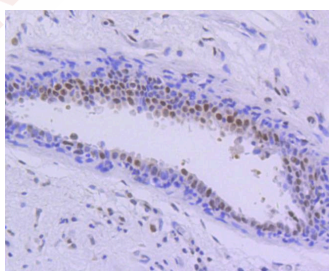
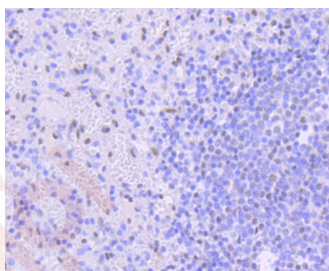
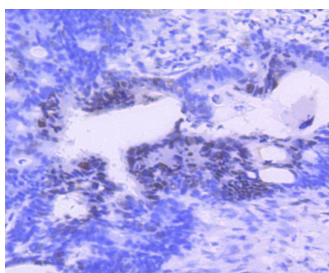
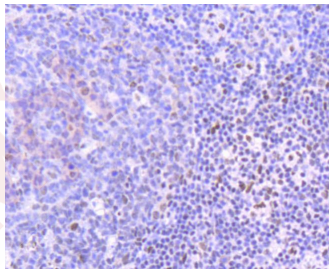
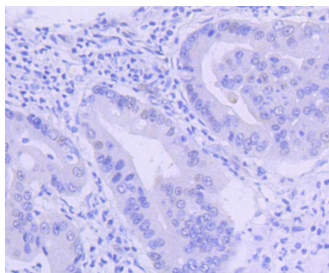
Ig Type:	IgG
Reactivity:	Human,Mouse
Conjugation:	Unconjugated
Molecular Weight:	Theoretical: 32 kDa.
Clone:	6F773
Purification:	ProA affinity purified

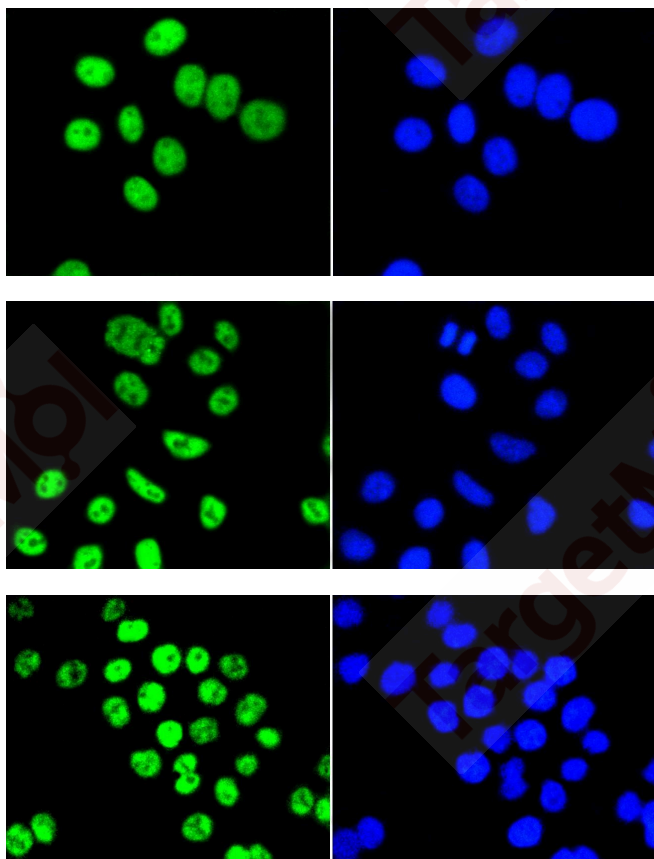
Applications

Verified Activity:

1. Western blot analysis of PIM1 on different lysates using anti-PIM1 antibody at 1/1,000 dilution. Positive control: Lane 1: BT-20, Lane 2: HepG2, Lane 3: SW480.
2. Immunohistochemical analysis of paraffin-embedded human gastric carcinoma tissue using anti-PIM1 antibody. Counter stained with hematoxylin.
3. Immunohistochemical analysis of paraffin-embedded human tonsil tissue using anti-PIM1 antibody. Counter stained with hematoxylin.
4. Immunohistochemical analysis of paraffin-embedded human colon cancer tissue using anti-PIM1 antibody. Counter stained with hematoxylin.
5. Immunohistochemical analysis of paraffin-embedded human spleen tissue using anti-PIM1 antibody. Counter stained with hematoxylin.
6. Immunohistochemical analysis of paraffin-embedded human breast carcinoma tissue using anti-PIM1 antibody. Counter stained with hematoxylin.
7. Immunohistochemical analysis of paraffin-embedded human gastric carcinoma tissue using anti-PIM1 antibody. Counter stained with hematoxylin.
8. ICC staining PIM1 in BT-20 cells (green). The nuclear counter stain is DAPI (blue). Cells were fixed in paraformaldehyde, permeabilised with 0.25% Triton X100/PBS.
9. ICC staining PIM1 in HepG2 cells (green). The nuclear counter stain is DAPI (blue). Cells were fixed in paraformaldehyde, permeabilised with 0.25% Triton X100/PBS.
10. ICC staining PIM1 in SW480 cells (green). The nuclear counter stain is DAPI (blue). Cells were fixed in paraformaldehyde, permeabilised with 0.25% Triton X100/PBS.







Application: ICC/IF,IHC,WB

Recommended WB: 1:1000-2000; IHC: 1:50-200; ICC/IF: 1:50-200

Properties

Stability & Storage: Store at -20°C or -80°C for 12 months. Avoid repeated freeze-thaw cycles.

Shipping: Shipping with blue ice.

Antigen Details

Immunogen: Recombinant Protein

Uniprot ID: P11309

Synonyms: Proviral integration site 2;Oncogene PIM1;Proviral integration site 1;pim 1 kinase 44 kDa isoform;PIM 1;Pim2;pim1 kinase 44 kDa isoform;pim 1 oncogene (proviral integration site 1); Proto-oncogene serine/threonine-protein kinase Pim-1;Pim 1 oncogene;PIM1_HUMAN;Proto oncogene serine/threonine protein kinase Pim 1;PIM3;Pim 1 kinase;Oncogene PIM 1;PIM1;PIM

Research Background

Pim-1 is a serine/threonine kinase that cooperates with c-Myc in lymphoid cell transformation. The expression of pim-1 increases during the progression from early to late G1, remaining high at the G1/S boundary and G2 phases of the cell cycle. Pim-1 is regulated at both the transcriptional and translational level, and it has been shown to be induced by IL-2 stimulation. Pim-1 also plays a role in T cell differentiation, and it has been shown to stimulate c-Myc-mediated apoptosis upstream of caspase-3-like proteases.

Inhibitor · Natural Compounds · Compound Libraries · Recombinant Proteins

This product is for Research Use Only. Not for Human or Veterinary or Therapeutic Use

Tel:781-999-4286 E_mail:info@targetmol.com Address:34 Washington Street,Wellesley Hills,MA 02481