

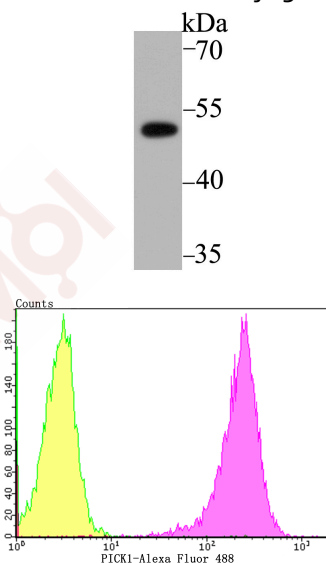
Anti-PICK1 Antibody (5X729)

Product Details

Ig Type:	IgG
Reactivity:	Human,Mouse,Rat
Conjugation:	Unconjugated
Molecular Weight:	Theoretical: 47 kDa.
Clone:	5X729
Purification:	ProA affinity purified

Applications

1. Western blot analysis of PICK1 on SK-Br-3 cell lysate using anti-PICK1 antibody at 1/5,000 dilution.
2. Flow cytometric analysis of 293T cells with PICK1 antibody at 1/100 dilution (purple) compared with an unlabelled control (cells without incubation with primary antibody; yellow). Alexa Fluor 488-conjugated goat anti-rabbit IgG was used as the secondary antibody.



Application:	FCM,IP,WB
Recommended	WB: 1:2000-5000; IP: 1:10-50; FCM: 1:50-100

Properties

- Stability & Storage: Store at -20°C or -80°C for 12 months. Avoid repeated freeze-thaw cycles.
- Shipping: Shipping with blue ice.

Antigen Details

Immunogen:	Recombinant Protein: within N-terminal human PICK1
Antigen Species:	human
Uniprot ID:	Q9NRD5
Synonyms:	Protein kinase C-alpha-binding protein;Protein that interacts with C kinase 1;Protein interacting with PRKCA;PRKCA binding protein;PRKCABP;PICK1_HUMAN;MGC15204;PICK 1; OTTHUMP00000028509;Protein interacting with PRKCA 1;dJ1039K5;Protein interacting with C kinase 1;Pick1;Protein kinase C alpha binding protein;PRKCA-binding protein

Research Background

Protein interacting with C kinase 1 (PICK1) is a PDZ-domain containing protein that is located in the perinuclear region and is phosphorylated in response to PKC α activation. PKC α , which is essential for the regulation of proliferation and differentiation in numerous cell types, contains within its catalytic region a PDZ-binding domain that is absent from other PKC isoforms. Mutation of the PICK1 PDZ domain inhibits the binding of PICK1 to PKC α . PICK1 also interacts with the carboxy terminus of α -amino-3-hydroxy-5-methyl-isoxazole-4-propionic acid (AMPA) receptor, a neurotransmitter receptor located at excitatory synapses, suggesting that PICK1 plays a role in the modulation of synaptic transmission by targeting and anchoring AMPA to specific synapses.

Inhibitor · Natural Compounds · Compound Libraries · Recombinant Proteins

This product is for Research Use Only · Not for Human or Veterinary or Therapeutic Use

Tel:781-999-4286 E_mail:info@targetmol.com Address:34 Washington Street,Wellesley Hills,MA 02481