

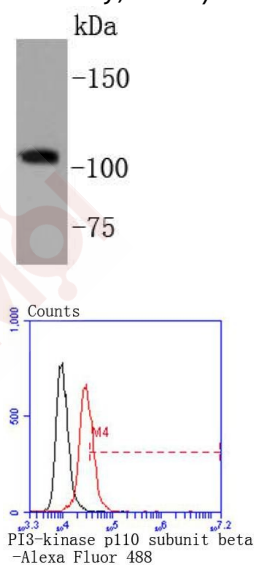
Anti-PIK3CB Antibody (1D133)

Product Details

Ig Type:	IgG
Reactivity:	Human
Conjugation:	Unconjugated
Molecular Weight:	Theoretical: 123 kDa.
Clone:	1D133
Purification:	ProA affinity purified

Applications

1. Western blot analysis of PI3-kinase p110 subunit beta on Hela cell lysates using anti-PI3-kinase p110 subunit beta antibody at 1/1,000 dilution.
2. Flow cytometric analysis of Hela cells with PI3-kinase p110 subunit beta antibody at 1/50 dilution (red) compared with an unlabelled control (cells without incubation with primary antibody; black). Alexa Fluor 488-conjugated goat anti rabbit IgG wa secondary.



Application:	FCM,IP,WB
Recommended	WB: 1:1000; FCM: 1:50-100

Properties

- Stability & Storage: Store at -20°C or -80°C for 12 months. Avoid repeated freeze-thaw cycles.
- Shipping: Shipping with blue ice.

Antigen Details

Immunogen:	Recombinant Protein
Uniprot ID:	P42338
Synonyms:	Phosphatidylinositol 4,5-bisphosphate 3-kinase catalytic subunit beta isoform;PtdIns-3-kinase subunit beta;p110beta;PI3K-beta;PI3-kinase subunit beta;Phosphatidylinositol 4,5-bisphosphate 3-kinase 110 kDa catalytic subunit beta;EC 2.7.1.153;PIK3C1;PtdIns-3-kinase subunit p110-beta;PI3Kbeta

Research Background

Phosphatidylinositol 3-kinase (PI 3-kinase) is composed of p85 and p110 subunits. p85 lacks PI 3-kinase activity and acts as an adapter, coupling p110 to activated protein tyrosine kinase. Two forms of p85 have been described (p85 α and p85 β), each possessing one SH3 and two SH2 domains. Various p110 isoforms have been identified. p110 α and p110 β interact with p85 α , and p110 α has also been shown to interact with p85 β in vitro. p110 expression is restricted to white blood cells. It has been shown to bind p85 α and β , but it apparently does not phosphorylate these subunits. p110 δ seems to have the capacity to autophosphorylate. p110 γ does not interact with the p85 subunits. It has been shown to be activated by α and β γ heterotrimeric G proteins.

Inhibitor · Natural Compounds · Compound Libraries · Recombinant Proteins

This product is for Research Use Only · Not for Human or Veterinary or Therapeutic Use

Tel:781-999-4286 E_mail:info@targetmol.com Address:34 Washington Street,Wellesley Hills,MA 02481