

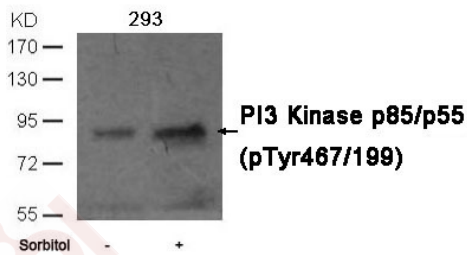
Anti-Phospho-PIK3R1 (Tyr467, 199) Polyclonal Antibody

Product Details

Ig Type:	IgG
Reactivity:	Human,Mouse,Rat
Conjugation:	Unconjugated
Molecular Weight:	Actual: 55, 85 kDa.
Purification:	Antibodies were produced by immunizing rabbits with synthetic phosphopeptide and KLH conjugates. Antibodies were purified by affinity-chromatography using epitope-specific phosphopeptide. Non-phospho specific antibodies were removed by chromatography using non-phosphopeptide.

Applications

- Verified Activity:
1. Western blot analysis of extracts from 293 cells untreated or treated with sorbitol using PI3 Kinase p85/p55 (phospho-Tyr467/199) Antibody TMAC-03293.
 2. Immunohistochemical analysis of paraffin-embedded Human-uterus tissue.



Application: IF,IHC,WB

Properties

- Stability & Storage: Store at 2°C-8°C for 1 month. Store at -20°C or -80°C for 12 months. Avoid repeated freeze-thaw cycles.
- Shipping: Shipping with blue ice.

Antigen Details

Immunogen:	Peptide sequence around phosphorylation site of tyrosine 467 (L-Y(p)-E-E-Y) derived from Human PI3 Kinase p85/p55
Antigen Species:	human
Uniprot ID:	P27986
Synonyms:	IMD36;p85-ALPHA;P85A;GRB1;p-PI3 kinase p85 alpha/gamma (Tyr467, Tyr199);PI3-kinase p85 subunit gamma;Phosphatidylinositol 3-kinase 85 kDa regulatory subunit alpha;PI3-kinase subunit p85-alpha;PI3-kinase p85 subunit alpha;PI 3-kinase p85 α ;PtdIns-3-kinase regulatory subunit alpha;PI 3 Kinase p85 alpha;SH3_PI3K_p85alpha;AGM7;PI3-kinase regulatory subunit alpha;PI3 kinase p85 alpha/gamma (p-Y467, p-Y199);phosphoinositide-3-kinase regulatory subunit 1;PI3K regulatory subunit alpha;PI 3-kinase p85- α ;PI 3-kinase p85 α ;PI3 kinase p85 alpha/gamma (p-Tyr467, p-Tyr199);Phosphatidylinositol 3-kinase regulatory subunit alpha; PtdIns-3-kinase regulatory subunit p85-alpha;p85;p-PI3 kinase p85 alpha/gamma (Y467, Y199)

Research Background

Binds to activated (phosphorylated) protein-Tyr kinases, through its SH2 domain, and acts as an adapter, mediating the association of the p110 catalytic unit to the plasma membrane. Necessary for the insulin-stimulated increase in glucose uptake and glycogen synthesis in insulin-sensitive tissues. Binds to activated (phosphorylated) protein-tyrosine kinases through its SH2 domain and regulates their kinase activity. During insulin stimulation, it also binds to IRS-1./Binds to activated (phosphorylated) protein-tyrosine kinases, through its SH2 domain, and acts as an adapter, mediating the association of the p110 catalytic unit to the plasma membrane.

Inhibitor · Natural Compounds · Compound Libraries · Recombinant Proteins

This product is for Research Use Only · Not for Human or Veterinary or Therapeutic Use

Tel:781-999-4286 E_mail:info@targetmol.com Address:34 Washington Street,Wellesley Hills,MA 02481