

## Anti-Phospho-MAPT (Ser396) Antibody (4F595)

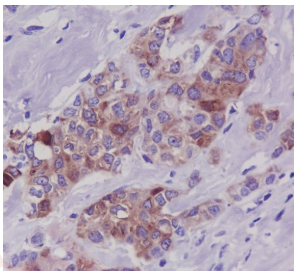
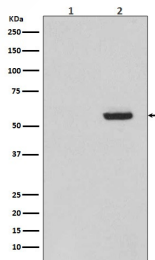
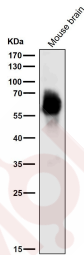
### Product Details

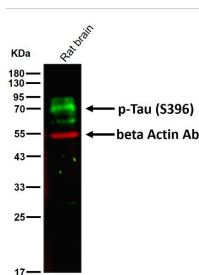
|                   |                        |
|-------------------|------------------------|
| Ig Type:          | IgG                    |
| Reactivity:       | Human,Mouse,Rat        |
| Conjugation:      | Unconjugated           |
| Molecular Weight: | Theoretical: 80 kDa.   |
| Clone:            | 4F595                  |
| Purification:     | ProA affinity purified |

### Applications

#### Verified Activity:

1. All lanes use the Antibody at 1:4K dilution for 1 hour at room temperature.
2. Western blot analysis of Phospho-Tau (S396) expression in (1) SH-SY5Y cell lysate treated with AP; (2) SH-SY5Y cell lysate.
3. Immunohistochemical analysis of paraffin-embedded human breast carcinoma, using Phospho-Tau (S396) Antibody.
4. All lanes use the Antibody at 1:400 dilution for 1 hour at room temperature.





Application: ICC/IF,IHC,WB

Recommended WB: 1:500-1000; IHC: 1:50-200; ICC/IF: 1:100-500

### Properties

Stability & Storage: Store at -20°C or -80°C for 12 months. Avoid repeated freeze-thaw cycles.

Shipping: Shipping with blue ice.

### Antigen Details

Immunogen: A synthesized phosphopeptide: human Tau around the phosphorylation site of Ser396

Antigen Species: Human

Uniprot ID: P10636

Synonyms: MAPT (p-Ser396);p-MAPT (S396);MAPT (p-S396);p-MAPT (Ser396)

### Research Background

Tau, also known as MAPT (microtubule-associated protein tau), MAPTL, MTBT1 or TAU, is a 758 amino acid protein that localizes to the cytoplasm, as well as to the cytoskeleton and the cell membrane, and contains four Tau/MAP repeats. Expressed in neuronal tissue and existing as multiple alternatively spliced isoforms, Tau functions to promote microtubule assembly and stability and is thought to be involved in the maintenance of neuronal polarity. Tau may also link microtubules with neural plasma membrane components and, in addition to its role in microtubule stability, is also necessary for cytoskeletal plasticity. Tau is highly subject to a variety of post-translational modifications, including phosphorylation on serine and threonine residues, polyubiquitination (and subsequent proteasomal degradation) and glycation of specific Tau isoforms. Defects in the gene encoding Tau are associated with Alzheimers disease, pallido-ponto-nigral degeneration (PPND), corticobasal degeneration (CBD) and progressive supranuclear palsy (PSP).

**Inhibitor · Natural Compounds · Compound Libraries · Recombinant Proteins**

This product is for Research Use Only · Not for Human or Veterinary or Therapeutic Use

Tel:781-999-4286 E\_mail:info@targetmol.com Address:34 Washington Street,Wellesley Hills,MA 02481