

Anti-Phospho-SMAD3 (S425) Antibody (5Q618)

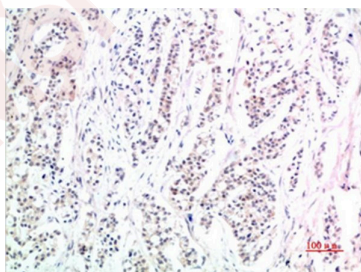
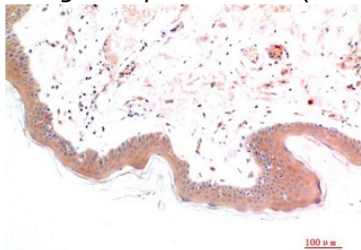
Product Details

| | |
|-------------------|----------------------|
| Ig Type: | IgG1 |
| Reactivity: | Human,Mouse,Rat |
| Conjugation: | Unconjugated |
| Molecular Weight: | Theoretical: 52 kDa. |
| Clone: | 5Q618 |

Applications

Verified Activity:

1. Immunohistochemical analysis of paraffin-embedded Human Skin Tissue using Phospho-Smad3 (S425) Mouse mAb diluted at 1:200.
2. Immunohistochemical analysis of paraffin-embedded Human Stomach Carcinoma Tissue using Phospho-Smad3 (S425) Mouse mAb diluted at 1:200.



| | |
|--------------|---------------|
| Application: | IHC |
| Recommended | IHC: 1:50-200 |

Properties

| | |
|----------------------|---|
| Stability & Storage: | Store at -20°C or -80°C for 12 months. Avoid repeated freeze-thaw cycles. |
| Shipping: | Shipping with blue ice. |

Antigen Details

Immunogen: A synthesized phosphopeptide: human Smad3 around the phosphorylation site of S425
Uniprot ID: P84022
Synonyms: MADH2;SMAD2 (p-Ser425);p-SMAD2 (Ser425);JV18;SMAD2 (p-S425);LDS6;p-SMAD2 (S425);MADR2;Phospho-SMAD2 (S425);JV18-1;hMAD-2;hSMAD2;CHTD8;SMAD2

Inhibitor · Natural Compounds · Compound Libraries · Recombinant Proteins

This product is for Research Use Only · Not for Human or Veterinary or Therapeutic Use

Tel:781-999-4286 E_mail:info@targetmol.com Address:34 Washington Street,Wellesley Hills,MA 02481