

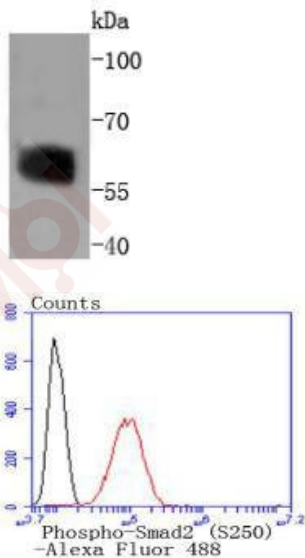
Anti-Phospho-SMAD2 (Ser250) Antibody (9G572)

Product Details

Ig Type:	IgG
Reactivity:	Human,Mouse,Rat
Conjugation:	Unconjugated
Molecular Weight:	Theoretical: 58 kDa.
Clone:	9G572
Purification:	ProA affinity purified

Applications

- Verified Activity:
1. Western blot analysis of Phospho-Smad2 (S250) on HeLa cells lysates using anti-Phospho-Smad2 (S250) antibody at 1/1,000 dilution.
 2. Flow cytometric analysis of HeLa cells with Phospho-Smad2 (S250) antibody at 1/50 dilution (red) compared with an unlabelled control (cells without incubation with primary antibody; black). Alexa Fluor 488-conjugated goat anti rabbit IgG was used as the secondary antibody.



Application:	FCM,WB
Recommended	WB: 1:1000-2000; FCM: 1:50-100

Properties

- Stability & Storage: Store at -20°C or -80°C for 12 months. Avoid repeated freeze-thaw cycles.
- Shipping: Shipping with blue ice.

Antigen Details

Immunogen: A synthesized phosphopeptide: human Smad2 around the phosphorylation site of Ser250
Antigen Species: Human
Uniprot ID: Q15796
Synonyms: MADH2;Phospho-SMAD2 (S250);hSMAD2;MADR2;SMAD2 (p-S250);hMAD-2;p-SMAD2 (Ser250);JV18-1;SMAD2 (p-Ser250);CHTD8;JV18;SMAD2;LDS6;p-SMAD2 (S250)

Research Background

Smad proteins, the mammalian homologs of the Drosophila mothers against decapentaplegic (Mad), have been implicated as downstream effectors of TGF β /BMP signaling. Smad1 (also designated Madr1 or JV4-1) and Smad5 are effectors of BMP-2 and BMP-4 function, while Smad2 (also designated Madr2 or JV18-1) and Smad3 are involved in TGF β ; and Activin-mediated growth modulation. Smad4 (also designated DPC4) has been shown to mediate all of the above activities through interaction with various Smad family members. Smad6 and Smad7 regulate the response to Activin/TGF β ; signaling by interfering with TGF β -mediated phosphorylation of other Smad proteins.

Inhibitor · Natural Compounds · Compound Libraries · Recombinant Proteins

This product is for Research Use Only · Not for Human or Veterinary or Therapeutic Use

Tel:781-999-4286 E_mail:info@targetmol.com Address:34 Washington Street,Wellesley Hills,MA 02481