

Anti-Phospho-INPP5D (Tyr1020) Antibody (3P963)

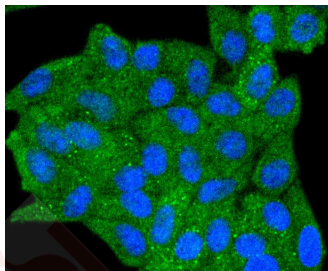
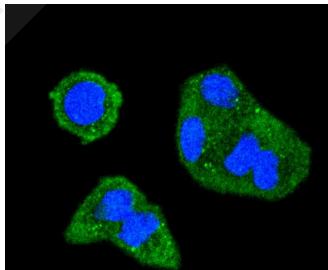
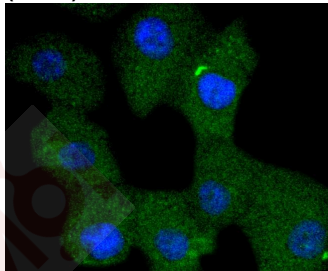
Product Details

Ig Type:	IgG
Reactivity:	Human
Conjugation:	Unconjugated
Molecular Weight:	Theoretical: 133 kDa.
Clone:	3P963
Purification:	ProA affinity purified

Applications

Verified Activity:

1. ICC staining Phospho-SHIP (Y1020) in A549 cells (green). The nuclear counter stain is DAPI (blue). Cells were fixed in paraformaldehyde, permeabilised with 0.25% Triton X100/PBS.
2. ICC staining Phospho-SHIP (Y1020) in Hela cells (green). The nuclear counter stain is DAPI (blue). Cells were fixed in paraformaldehyde, permeabilised with 0.25% Triton X100/PBS.
3. ICC staining Phospho-SHIP (Y1020) in HepG2 cells (green). The nuclear counter stain is DAPI (blue). Cells were fixed in paraformaldehyde, permeabilised with 0.25% Triton X100/PBS.



Application:	ICC,IP,WB
Recommended	WB: 1:1000; ICC: 1:50-200

Properties

Stability & Storage: Store at -20°C or -80°C for 12 months. Avoid repeated freeze-thaw cycles.

Shipping: Shipping with blue ice.

Antigen Details

Immunogen: A synthesized phosphopeptide: human SHIP around the phosphorylation site of Tyr1020

Antigen Species: Human

Uniprot ID: Q92835

Synonyms: INPP5D (p-Tyr1020);INPP5D (p-Y1020);p-INPP5D (Y1020);p-INPP5D (Tyr1020)

Research Background

The major translational product of the v-Fms oncogene, originally isolated from the McDonough strain of feline sarcoma virus, has been identified as a glycoprotein with intrinsic tyrosine kinase activity. The v-Fms human cellular homolog, c-Fms, has been molecularly cloned and mapped to band q34 on chromosome 5, and identified as the receptor for hematopoietic ligand, CSF-1. Ligand-induced activation of the intrinsic CSF-1R protein tyrosine kinase triggers its interaction with cytoplasmic effector molecules. One such effector molecule, SHIP-1 p145 (SH2-containing-inositol phosphatase), associates with activated Fms. SHIP-1 contains two phosphotyrosine-binding domains (PTB), a unique amino terminal SH2 domain, a proline-rich region, and two highly conserved motifs found among inositol phosphate 5-phosphatases. SHIP-1 displays both phosphatidylinositol 3,4,5-triphosphate and inositol 1,3,4,5-tetrakisphosphate polyphosphate 5-phosphatase activity. Evidence suggests that SHIP-1 may modulate Ras signaling in addition to inositol signaling pathways.

Inhibitor · Natural Compounds · Compound Libraries · Recombinant Proteins

This product is for Research Use Only · Not for Human or Veterinary or Therapeutic Use

Tel:781-999-4286 E_mail:info@targetmol.com Address:34 Washington Street,Wellesley Hills,MA 02481