

## Anti-Phosphoserine Antibody (5A614)

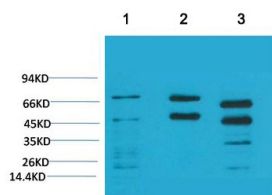
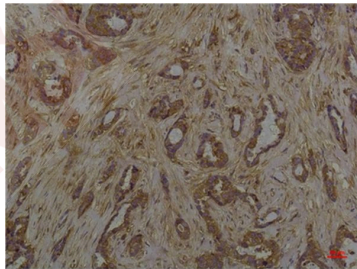
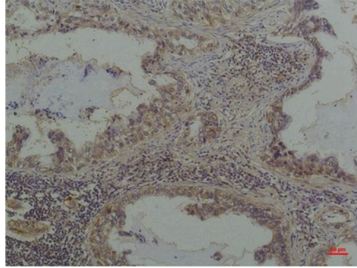
### Product Details

Ig Type: IgG1  
Conjugation: Unconjugated  
Clone: 5A614

### Applications

#### Verified Activity:

1. Immunohistochemical analysis of paraffin-embedded Human Lung Carcinoma using Phosphoserine Mouse mAb diluted at 1:200.
2. Immunohistochemical analysis of paraffin-embedded Human Breast Carcinoma using Phosphoserine Mouse mAb diluted at 1:200.
3. Western blot analysis of 1) Hela, 2) Rat Brain Tissue, 3) Mouse Brain Tissue with Phosphoserine Mouse mAb diluted at 1:2,000.



Application: IF,IHC,WB

Recommended WB: 1:2000-5000; IHC: 1:50-200

**Properties**

Stability & Storage: Store at -20°C or -80°C for 12 months. Avoid repeated freeze-thaw cycles.

Shipping: Shipping with blue ice.

---

**Antigen Details**

Immunogen: Recombinant Protein

**Inhibitor · Natural Compounds · Compound Libraries · Recombinant Proteins**

This product is for Research Use Only · Not for Human or Veterinary or Therapeutic Use

Tel:781-999-4286 E\_mail:info@targetmol.com Address:34 Washington Street,Wellesley Hills,MA 02481