

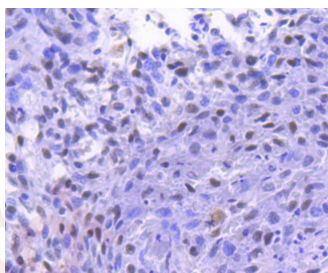
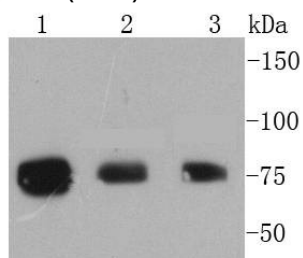
Anti-Phospho-RPS6KA1 (Thr359, Ser363) Antibody (9N204)

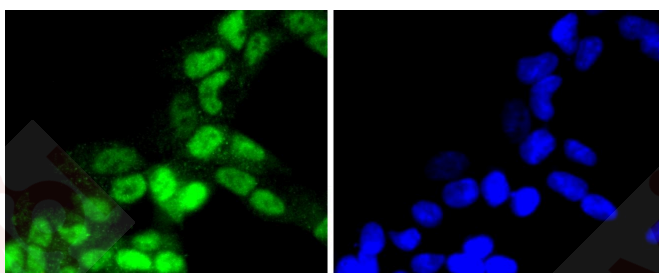
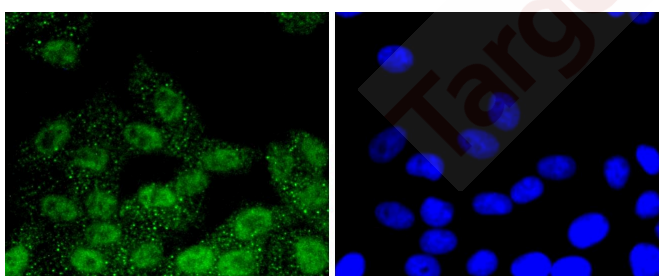
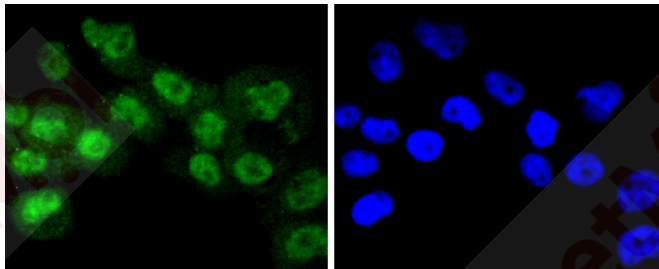
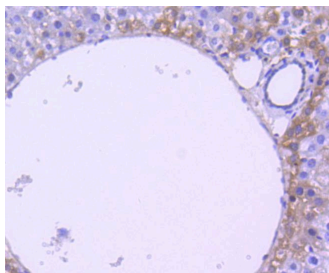
Product Details

| | |
|-------------------|------------------------|
| Ig Type: | IgG |
| Reactivity: | Human,Mouse,Rat |
| Conjugation: | Unconjugated |
| Molecular Weight: | Theoretical: 90 kDa. |
| Clone: | 9N204 |
| Purification: | ProA affinity purified |

Applications

1. Western blot analysis of Phospho-RSK1 p90 (T359+S363) on different lysates using anti-Phospho-RSK1 p90 (T359+S363) antibody at 1/1,000 dilution. Positive control: Lane 1: A431, Lane 2: 293, Lane 3: MCF-7.
2. Immunohistochemical analysis of paraffin-embedded human breast carcinoma tissue using anti-Phospho-RSK1 p90 (T359+S363) antibody. Counter stained with hematoxylin.
3. Immunohistochemical analysis of paraffin-embedded mouse liver tissue using anti-Phospho-RSK1 p90 (T359+S363) antibody. Counter stained with hematoxylin.
4. ICC staining Phospho-RSK1 p90 (T359+S363) in A431 cells (green). The nuclear counter stain is DAPI (blue). Cells were fixed in paraformaldehyde, permeabilised with 0.25% Triton X100/PBS.
5. ICC staining Phospho-RSK1 p90 (T359+S363) in HepG2 cells (green). The nuclear counter stain is DAPI (blue). Cells were fixed in paraformaldehyde, permeabilised with 0.25% Triton X100/PBS.
6. ICC staining Phospho-RSK1 p90 (T359+S363) in 293 cells (green). The nuclear counter stain is DAPI (blue). Cells were fixed in paraformaldehyde, permeabilised with 0.25% Triton X100/PBS.





Application: ICC,IHC,IP,WB

Recommended WB: 1:1000-2000; IHC: 1:50-200; ICC: 1:50-200

Properties

Stability & Storage: Store at -20°C or -80°C for 12 months. Avoid repeated freeze-thaw cycles.

Shipping: Shipping with blue ice.

Antigen Details

Immunogen: A synthesized phosphopeptide: human RSK1 p90 around the phosphorylation site of Thr359 and Ser363

Antigen Species: human

Uniprot ID: Q15418

Synonyms: Ribosomal protein S6 kinase 90kD polypeptide 1;MAPKAPK-1a;p-RPS6KA1 (Thr359, Ser363);HU 1;Ribosomal protein S6 kinase alpha 1;OTTHUMP00000004113;90 kDa ribosomal protein S6 kinase 1;HU1;Ribosomal S6 kinase 1;polypeptide 1;p-RPS6KA1 (T359, S363);MAPKAP kinase 1a;KS6A1_HUMAN;ribosomal protein S6 kinase;90kD;MAPKAPK1A;MAP kinase activated protein kinase 1a;S6K-alpha-1;EC 2.7.11.1;p90RSK1;Phospho-RPS6KA1 (T359, S363);RSK 1 p90;

dj590P13.1;RSK 1;p90 RSK1;RPS6KA1 (p-Thr359, Ser363);rps6ka;RSK1;p90S6K;Ribosomal protein S6 kinase polypeptide 1;RSK;RSK1p90;S6K alpha 1;Mitogen-activated protein kinase-activated protein kinase 1A;MGC79981;pp90RSK1;RPS6K1 alpha;RPS6KA1 (p-T359, S363)

Research Background

The family of ribosomal S6 kinases (Rsk), designated Rsk-1 (or MAPKAP kinase-1), Rsk-2 and Rsk-3, are intracellular serine/threonine kinases that are important signaling intermediates in response to a broad range of ligand activated receptor tyrosine kinases. A unique feature common to the members of the Rsk family is that each possesses two non-identical complete kinase catalytic domains. An additional Rsk protein, Rsk-4, shows a high level of homology to the three previously isolated members of the human Rsk family. Rsk-4 is most abundantly expressed in brain and kidney and plays a role in normal neuronal development. The family of ribosomal S6 kinases includes p70 S6 kinase and p70 S6 kinase β, which are thought to have similar regulatory functions. MSK1 (also designated RLPK) is a novel Rsk-related protein, which, like the p90 Rsk family members, contains two non-identical complete kinase catalytic domains.

Inhibitor · Natural Compounds · Compound Libraries · Recombinant Proteins

This product is for Research Use Only · Not for Human or Veterinary or Therapeutic Use

Tel:781-999-4286 E_mail:info@targetmol.com Address:34 Washington Street,Wellesley Hills,MA 02481