

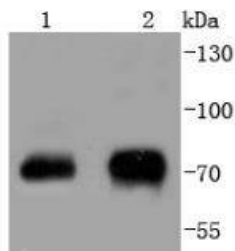
Anti-Phospho-RAF1 (Ser43) Antibody (1U306)

Product Details

Ig Type:	IgG
Reactivity:	Human,Mouse,Rat
Conjugation:	Unconjugated
Molecular Weight:	Theoretical: 73 kDa.
Clone:	1U306
Purification:	ProA affinity purified

Applications

Verified Activity: 1. Western blot analysis of Phospho-Raf1 (S43) on different lysates using anti-Phospho-Raf1 (S43) antibody at 1/1,000 dilution. Positive control: Lane 1: NIH/3T3, Lane 2: 293T.



Application:	WB
Recommended	WB: 1:1000-2000

Properties

Stability & Storage: Store at -20°C or -80°C for 12 months. Avoid repeated freeze-thaw cycles.
Shipping: Shipping with blue ice.

Antigen Details

Immunogen:	A synthesized phosphopeptide: human Raf1 around the phosphorylation site of Ser43
Antigen Species:	human
Uniprot ID:	P04049
Synonyms:	p-RAF1 (Ser43);Phospho-RAF1 (S43);RAF1 (p-S43);RAF1 (p-Ser43);p-RAF1 (S43)

Research Background

Several serine/threonine protein kinases have been implicated as intermediates in signal transduction pathways. These include ERK/MAP kinases, ribosomal S6 kinase (Rsk) and Raf-1. Raf-1 is a cytoplasmic protein with intrinsic serine/threonine activity. It is broadly expressed in nearly all cell lines tested to date and is the cellular homolog of v-Raf, the product of the transforming gene of the 3611 strain of murine sarcoma virus. The unregulated kinase activity of the v-Raf protein has been associated with transformation and mitogenesis while the activity of Raf-1 is normally suppressed by a regulatory N-terminal domain. Raf-1 is activated in response to activation of a variety of tyrosine kinase receptors as well as in response to pp60v-Src expression. There is accumulating evidence that Ras

A DRUG SCREENING EXPERT

p21 may play a role in activation of Raf-1 and may play the role of the messenger from membrane tyrosine kinases to Raf-1.

Inhibitor · Natural Compounds · Compound Libraries · Recombinant Proteins

This product is for Research Use Only · Not for Human or Veterinary or Therapeutic Use

Tel:781-999-4286 E_mail:info@targetmol.com Address:34 Washington Street,Wellesley Hills,MA 02481