

Anti-Phospho-CDC42 (Ser71) Antibody (7R21)

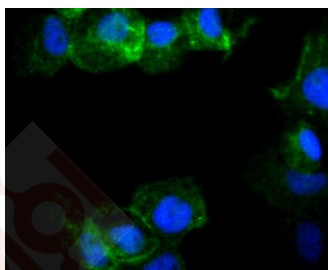
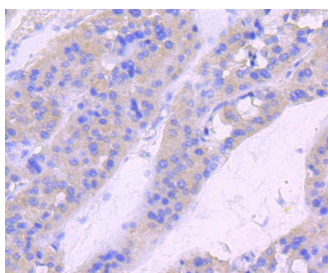
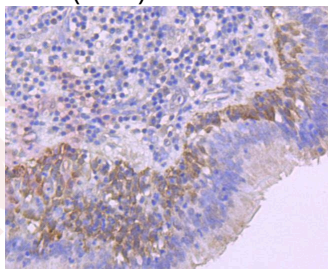
Product Details

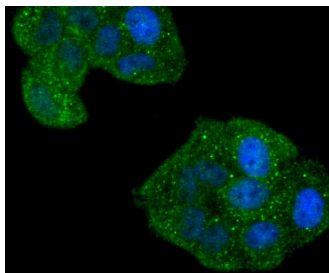
Ig Type:	IgG
Reactivity:	Human
Conjugation:	Unconjugated
Molecular Weight:	Theoretical: 23/21 kDa.
Clone:	7R21
Purification:	ProA affinity purified

Applications

Verified Activity:

1. Immunohistochemical analysis of paraffin-embedded human lung cancer tissue using anti-Phospho-Rac1+Cdc42 (Ser71) antibody. Counter stained with hematoxylin.
2. Immunohistochemical analysis of paraffin-embedded human liver cancer tissue using anti-Phospho-Rac1+Cdc42 (Ser71) antibody. Counter stained with hematoxylin.
3. ICC staining Phospho-Rac1+Cdc42 (Ser71) in A431 cells (green). The nuclear counter stain is DAPI (blue). Cells were fixed in paraformaldehyde, permeabilised with 0.25% Triton X100/PBS.
4. ICC staining Phospho-Rac1+Cdc42 (Ser71) in Hela cells (green). The nuclear counter stain is DAPI (blue). Cells were fixed in paraformaldehyde, permeabilised with 0.25% Triton X100/PBS.





Application: ICC/IF,IHC,WB

Recommended WB: 1:500-1000; IHC: 1:50-200; ICC/IF: 1:50-200

Properties

Stability & Storage: Store at -20°C or -80°C for 12 months. Avoid repeated freeze-thaw cycles.

Shipping: Shipping with blue ice.

Antigen Details

Immunogen: A synthesized phosphopeptide: human CDC42 around the phosphorylation site of Ser71

Antigen Species: human

Uniprot ID: P60953

Synonyms: p-CDC42 (S71);CDC42 (p-S71);p-CDC42 (Ser71);CDC42 (p-Ser71)

Research Background

A large number of low molecular weight GTP-binding proteins of the Ras superfamily have been identified in eukaryotic cells; they regulate many fundamental processes such as cell growth, vesicle traffic and cytoskeletal organization. GTPase-activating proteins accelerate the intrinsic rate of GTP hydrolysis of Ras-related proteins, resulting in downregulation of their active form. Rac 1 is activated in a type I interferon (IFN) dependent manner; its function is required for downstream engagement of the p38 MAP kinase pathway. The p38 MAP kinase plays an essential role in IFN-dependent transcriptional regulation. The serine/threonine kinase Akt, of the phospho-inositide 3-kinase signal transduction pathway phosphorylates serine 71 of Rac 1. The superfamily of GTP-binding proteins, for which the Ras proteins are prototypes, has been implicated in regulation of diverse biological activities involving various aspects of cell growth and division. One mammalian member of the family, Cdc42, has an amino acid sequence that is similar to those of various members of the Ras superfamily proteins, including N-, K- and H-Ras, Rho proteins and the Rac proteins. On the basis of in vitro phosphorylation studies, it has been suggested that human Cdc42 may function in the signaling pathway of the EGF receptor or related growth factor receptor protein kinases. The Dbl oncogene has been shown to specifically catalyze dissociation of GDP from human Cdc42.

Inhibitor · Natural Compounds · Compound Libraries · Recombinant Proteins

This product is for Research Use Only · Not for Human or Veterinary or Therapeutic Use

Tel:781-999-4286 E_mail:info@targetmol.com Address:34 Washington Street,Wellesley Hills,MA 02481
