

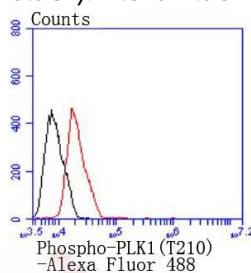
Anti-Phospho-PLK1 (Thr210) Antibody (5R556)

Product Details

Ig Type:	IgG
Reactivity:	Human
Conjugation:	Unconjugated
Molecular Weight:	Theoretical: 68 kDa.
Clone:	5R556
Purification:	ProA affinity purified

Applications

Verified Activity: 1. Flow cytometric analysis of MCF-7 cells with Phospho-PLK1 (T210) antibody at 1/50 dilution (red) compared with an unlabelled control (cells without incubation with primary antibody; black). Alexa Fluor 488-conjugated goat anti rabbit IgG was used as the secondary antibody.



Application:	FCM, ICC/IF, WB
Recommended	WB: 1:500-1000; ICC/IF: 1:10-50; FCM: 1:10-50

Properties

Stability & Storage:	Store at -20°C or -80°C for 12 months. Avoid repeated freeze-thaw cycles.
Shipping:	Shipping with blue ice.

Antigen Details

Immunogen:	A synthesized phosphopeptide: human PLK1 around the phosphorylation site of Thr210
Antigen Species:	human
Uniprot ID:	P53350
Synonyms:	p-PLK1 (Thr210); p-PLK1 (T210); PLK1 (p-Thr210); PLK1 (p-T210)

Research Background

Plk (for polo-like kinase) encodes a serine/threonine kinase that is closely related to polo and CDC5, genes that are required for passage through mitosis in *Drosophila* and *Saccharomyces*, respectively. Polo and CDC5 both code for proteins that are involved in regulating the function of the mitotic spindle. Plk protein accumulates in the cell during the S and G2 phases of the cell cycle and both protein content and catalytic activity peak at the onset of mitosis, followed by a rapid reduction after mitosis. Plk expression is detectable in mitotically active tissues such as colon and placenta, as well as in tumors of various origins. It has also been suggested that Plk may serve as a marker of

cell proliferation. The phosphorylation of mouse, rat and human Plk on Thr 210 enhances Plk catalytic activity.

Inhibitor · Natural Compounds · Compound Libraries · Recombinant Proteins

This product is for Research Use Only · Not for Human or Veterinary or Therapeutic Use

Tel:781-999-4286 E_mail:info@targetmol.com Address:34 Washington Street,Wellesley Hills,MA 02481