

Anti-Phospho-PAK1/2/3 (Ser139) Antibody (4F435)

Product Details

Ig Type:	IgG
Reactivity:	Human,Mouse,Rat
Conjugation:	Unconjugated
Molecular Weight:	Theoretical: 65 kDa.
Clone:	4F435
Purification:	ProA affinity purified

Applications

1. Western blot analysis of Phospho-PAK1 (S144)+PAK2 (S141)+PAK3 (S139) on different lysates using anti-Phospho-PAK1 (S144)+PAK2 (S141)+PAK3 (S139) antibody at 1/1,000 dilution.

Positive control: Lane 1: Hela, Lane 2: NIH/3T3, Lane 3: SH-SY-5Y.

2. Immunohistochemical analysis of paraffin-embedded human liver cancer tissue using anti-Phospho-PAK1 (S144)+PAK2(S141)+PAK3 (S139) antibody. Counter stained with hematoxylin.

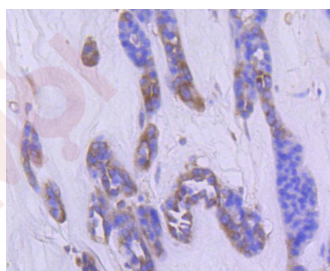
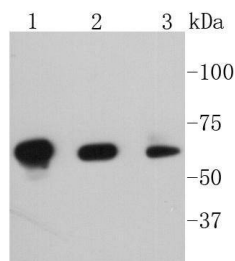
3. Immunohistochemical analysis of paraffin-embedded human colon cancer tissue using anti-Phospho-PAK1 (S144)+PAK2 (S141)+PAK3 (S139) antibody. Counter stained with hematoxylin.

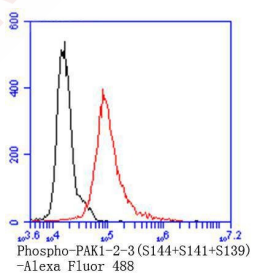
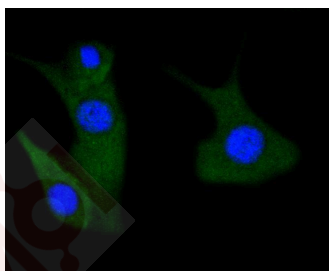
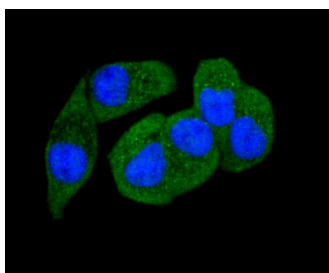
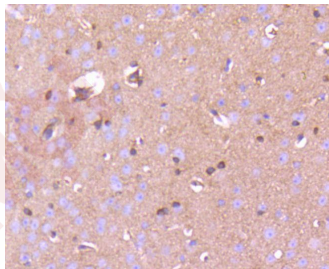
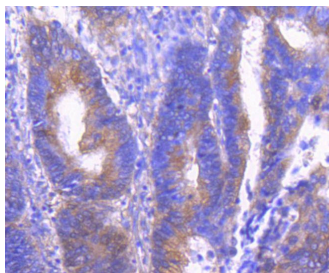
4. Immunohistochemical analysis of paraffin-embedded mouse brain tissue using anti-Phospho-PAK1(S144)+PAK2(S141)+PAK3(S139) antibody. Counter stained with hematoxylin.

Verified Activity: 5. ICC staining Phospho-PAK1 (S144)+PAK2 (S141)+PAK3 (S139) in Hela cells (green). The nuclear counter stain is DAPI (blue). Cells were fixed in paraformaldehyde, permeabilised with 0.25% Triton X100/PBS.

6. ICC staining Phospho-PAK1 (S144)+PAK2 (S141)+PAK3 (S139) in NIH/3T3 cells (green). The nuclear counter stain is DAPI (blue). Cells were fixed in paraformaldehyde, permeabilised with 0.25% Triton X100/PBS.

7. Flow cytometric analysis of NIH/3T3 cells with Phospho-PAK1 (S144)+PAK2 (S141)+PAK3 (S139) antibody at 1/50 dilution (red) compared with an unlabelled control (cells without incubation with primary antibody; black). Alexa Fluor 488-conjugated goat anti rabbit IgG was used as the secondary antibody.





Application: FCM, ICC/IF, IHC, IP, WB

Recommended WB: 1:1000-2000; IHC: 1:50-200; ICC/IF: 1:50-200; FCM: 1:50-100

Properties

Stability & Storage: Store at -20°C or -80°C for 12 months. Avoid repeated freeze-thaw cycles.

Shipping: Shipping with blue ice.

Antigen Details

Immunogen: A synthesized phosphopeptide: human PAK1 around the phosphorylation site of Ser144
Antigen Species: human
Synonyms: PAK1/PAK2/PAK3 (p-S139);p-PAK1/PAK2/PAK3 (S139);p-PAK1/PAK2/PAK3 (Ser139);
PAK1/PAK2/PAK3 (p-Ser139);Phospho-PAK1/PAK2/PAK3 (S139)

Research Background

Cytoplasm, Cell membrane.

Inhibitor · Natural Compounds · Compound Libraries · Recombinant Proteins

This product is for Research Use Only· Not for Human or Veterinary or Therapeutic Use

Tel:781-999-4286 E_mail:info@targetmol.com Address:34 Washington Street,Wellesley Hills,MA 02481