

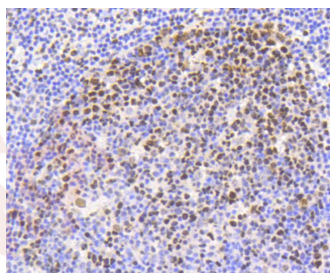
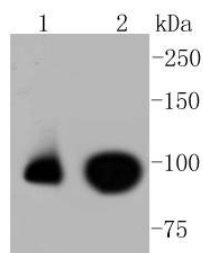
Anti-Phospho-NFE2L2 (Ser40) Antibody (7L44)

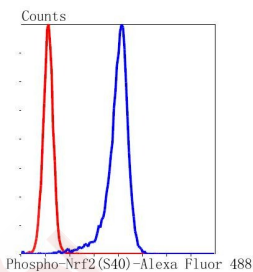
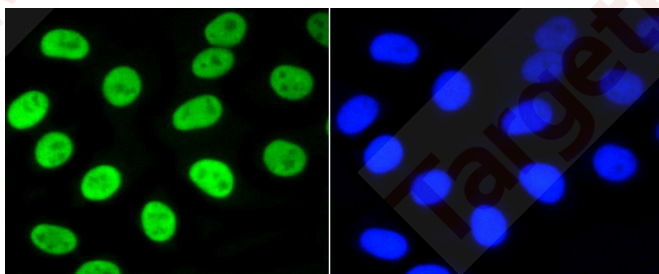
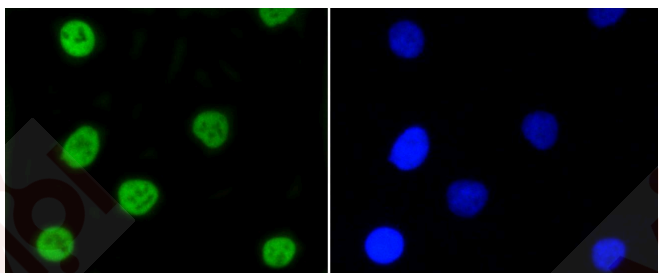
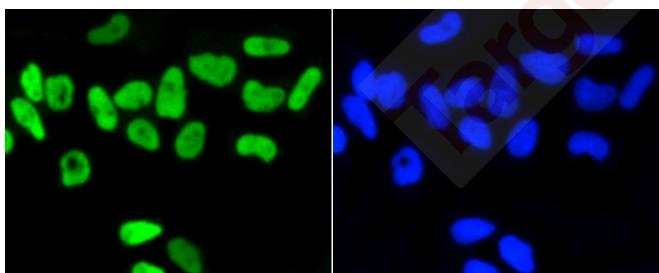
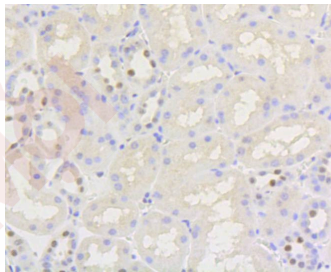
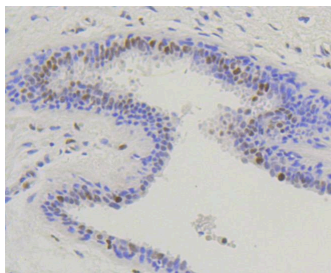
Product Details

| | |
|-------------------|-------------------------|
| Ig Type: | IgG |
| Reactivity: | Human |
| Conjugation: | Unconjugated |
| Molecular Weight: | Theoretical: 90 kDa. |
| Clone: | 7L44 |
| Purification: | Affinity-chromatography |

Applications

1. Western blot analysis of Phospho-Nrf2 (S40) on different lysates using anti-Phospho-Nrf2 (S40) antibody at 1/1,000 dilution. Positive control: Lane 1: HepG2, Lane 2: Raji.
 2. Immunohistochemical analysis of paraffin-embedded human tonsil tissue using anti-Phospho-Nrf2 (S40) antibody. Counter stained with hematoxylin.
 3. Immunohistochemical analysis of paraffin-embedded human breast carcinoma tissue using anti-Phospho-Nrf2 (S40) antibody. Counter stained with hematoxylin.
 4. Immunohistochemical analysis of paraffin-embedded human kidney tissue using anti-Phospho-Nrf2 (S40) antibody. Counter stained with hematoxylin.
- Verified Activity:
5. ICC staining Phospho-Nrf2 (S40) in Hela cells (green). The nuclear counter stain is DAPI (blue). Cells were fixed in paraformaldehyde, permeabilised with 0.25% Triton X100/PBS.
 6. ICC staining Phospho-Nrf2 (S40) in A549 cells (green). The nuclear counter stain is DAPI (blue). Cells were fixed in paraformaldehyde, permeabilised with 0.25% Triton X100/PBS.
 7. ICC staining Phospho-Nrf2 (S40) in HepG2 cells (green). The nuclear counter stain is DAPI (blue). Cells were fixed in paraformaldehyde, permeabilised with 0.25% Triton X100/PBS.
 8. Flow cytometric analysis of K562 cells with Phospho-Nrf2 (S40) antibody at 1/50 dilution (blue) compared with an unlabelled control (cells without incubation with primary antibody; red). Alexa Fluor 488-conjugated goat anti rabbit IgG was used as the secondary antibody.





Application: FCM, ICC/IF, IHC, IP, WB

Recommended WB: 1:1000-2000; IHC: 1:50-200; ICC/IF: 1:50-200; IP: 1:50; FCM: 1:50

A DRUG SCREENING EXPERT

Properties

Stability & Storage: Store at -20°C or -80°C for 12 months. Avoid repeated freeze-thaw cycles.

Shipping: Shipping with blue ice.

Antigen Details

Immunogen: A synthesized phosphopeptide: human Nrf2 around the phosphorylation site of S40

Antigen Species: human

Uniprot ID: Q16236

Synonyms: NFE2L2 (p-S40);NFE2L2 (p-Ser40);p-NFE2L2 (Ser40);p-NFE2L2 (S40)

Research Background

Transcription activator that binds to antioxidant response (ARE) elements in the promoter regions of target genes. Important for the coordinated up-regulation of genes in response to oxidative stress. May be involved in the transcriptional activation of genes of the beta-globin cluster by mediating enhancer activity of hypersensitive site 2 of the beta-globin locus control region.

Inhibitor · Natural Compounds · Compound Libraries · Recombinant Proteins

This product is for Research Use Only · Not for Human or Veterinary or Therapeutic Use

Tel:781-999-4286 E_mail:info@targetmol.com Address:34 Washington Street,Wellesley Hills,MA 02481