

Anti-Phospho-JNK1/2/MAPK10 (Thr183/183/221) Antibody (7N200)

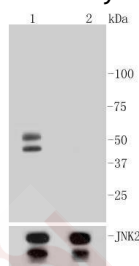
Product Details

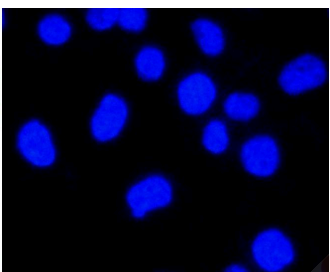
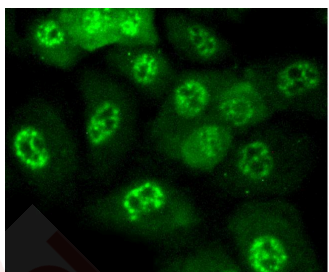
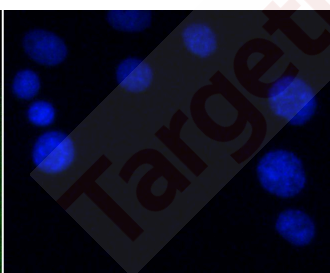
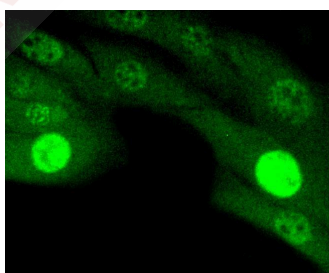
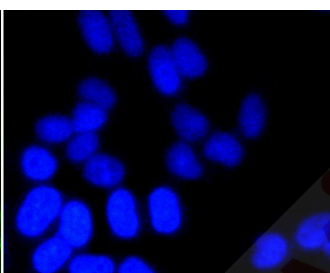
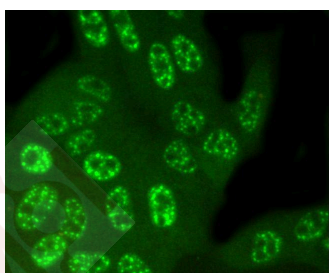
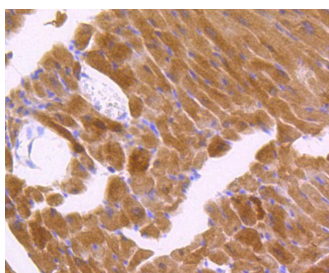
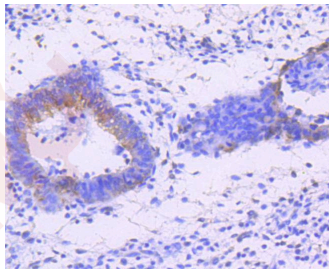
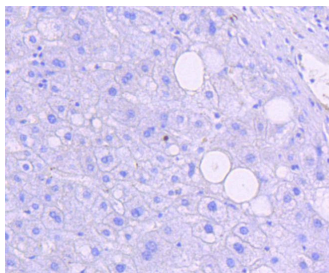
Ig Type:	IgG
Reactivity:	Human,Mouse,Rat
Conjugation:	Unconjugated
Molecular Weight:	Theoretical: 54/46 kDa.
Clone:	7N200
Purification:	ProA affinity purified

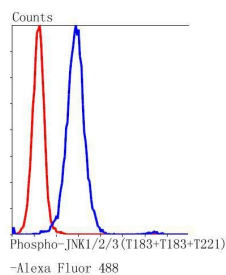
Applications

Verified Activity:

1. Western blot analysis of Phospho-JNK1/2/3 (T183+T183+T221) on different lysates using anti-Phospho-JNK1/2/3 (T183+T183+T221) antibody at 1/1,000 dilution. Positive control: Lane 1: NIH/3T3 cell lysate, treated with Anisomycin, Lane 2: NIH/3T3 cell lysate, untreated.
2. Immunohistochemical analysis of paraffin-embedded human liver tissue using anti-Phospho-JNK1/2/3 (T183+T183+T221) antibody. Counter stained with hematoxylin.
3. Immunohistochemical analysis of paraffin-embedded human uterus tissue using anti-Phospho-JNK1/2/3 (T183+T183+T221) antibody. Counter stained with hematoxylin.
4. Immunohistochemical analysis of paraffin-embedded mouse heart tissue using anti-Phospho-JNK1/2/3 (T183+T183+T221) antibody. Counter stained with hematoxylin.
5. ICC staining Phospho-JNK1/2/3 (T183+T183+T221) in Hela cells (green). The nuclear counter stain is DAPI (blue). Cells were fixed in paraformaldehyde, permeabilised with 0.25% Triton X100/PBS.
6. ICC staining Phospho-JNK1/2/3 (T183+T183+T221) in NIH/3T3 cells (green). The nuclear counter stain is DAPI (blue). Cells were fixed in paraformaldehyde, permeabilised with 0.25% Triton X100/PBS.
7. ICC staining Phospho-JNK1/2/3 (T183+T183+T221) in HUVEC cells (green). The nuclear counter stain is DAPI (blue). Cells were fixed in paraformaldehyde, permeabilised with 0.25% Triton X100/PBS.
8. Flow cytometric analysis of Hela cells with Phospho-JNK1/2/3 (T183+T183+T221) antibody at 1/50 dilution (blue) compared with an unlabelled control (cells without incubation with primary antibody; red). Alexa Fluor 488-conjugated goat anti rabbit IgG was used as the secondary antibody.







Application: FCM,ICC/IF,IHC,IP,WB

Recommended WB: 1:1000-2000; IHC: 1:50-200; ICC/IF: 1:50-200; FCM: 1:50-100

Properties

Stability & Storage: Store at -20°C or -80°C for 12 months. Avoid repeated freeze-thaw cycles.

Shipping: Shipping with blue ice.

Antigen Details

Immunogen: A synthesized phosphopeptide: human JNK1/2/3 around the phosphorylation site of Thr183 + Thr183 + Thr221

Antigen Species: Human

Synonyms: p-JNK1/2/MAPK10 (T183/183/221);p-JNK1/2/MAPK10 (Thr183/183/221);JNK1/2/MAPK10 (p-Thr183/183/221);JNK1/2/MAPK10 (p-T183/183/221)

Research Background

JNKs (c-Jun N-terminal kinases) belong to a family of MAP kinases that are involved in a variety of cellular processes, including transcriptional regulation and cellular proliferation, differentiation and development. JNK2 (c-Jun N-terminal kinase 2) and JNK3 (c-Jun N-terminal kinase 3) are 424 and 464 amino acid proteins, respectively, that each contain one protein kinase domain and use magnesium as a cofactor to catalyze the phosphorylation of target proteins, thereby playing a role in a variety of events throughout the cell. Both JNK2 and JNK3 exist as multiple alternatively spliced isoforms and are subject to post-translational phosphorylation on Thr 183 and Thr 221, respectively, an event which activates JNK2/JNK3 enzymatic activity. Defects in the gene encoding JNK3 are a cause of epileptic encephalopathy of the Lennox-Gastaut type, a group of epileptic disorders characterized by severe psychomotor delay and seizures.

Inhibitor · Natural Compounds · Compound Libraries · Recombinant Proteins

This product is for Research Use Only · Not for Human or Veterinary or Therapeutic Use

Tel:781-999-4286 E_mail:info@targetmol.com Address:34 Washington Street,Wellesley Hills,MA 02481