

Anti-Phospho-NFKBIA (Ser32) Antibody (6R546)

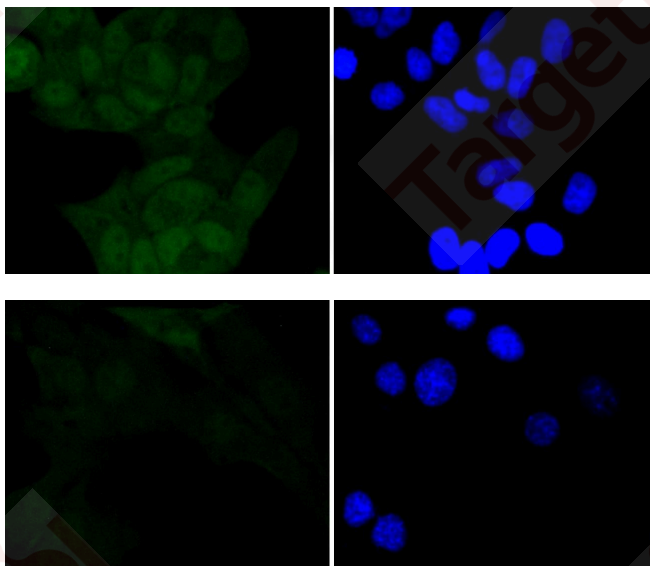
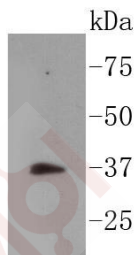
Product Details

Ig Type:	IgG
Reactivity:	Human
Conjugation:	Unconjugated
Molecular Weight:	Theoretical: 36 kDa.
Clone:	6R546
Purification:	ProA affinity purified

Applications

Verified Activity:

1. Western blot analysis of Phospho-IKB alpha (S32) on Ags cell lysates using anti-Phospho-IKB alpha (S32) antibody at 1/1,000 dilution.
2. ICC staining Phospho-IKB alpha (S32) in Hela cells (green). The nuclear counter stain is DAPI (blue). Cells were fixed in paraformaldehyde, permeabilised with 0.25% Triton X100/PBS.
3. ICC staining Phospho-IKB alpha (S32) in NIH/3T3 cells (green). The nuclear counter stain is DAPI (blue). Cells were fixed in paraformaldehyde, permeabilised with 0.25% Triton X100/PBS.



Application:	ICC,IP,WB
Recommended	WB: 1:1000; ICC: 1:50-200

A DRUG SCREENING EXPERT

Properties

Stability & Storage: Store at -20°C or -80°C for 12 months. Avoid repeated freeze-thaw cycles.

Shipping: Shipping with blue ice.

Antigen Details

Immunogen: A synthesized phosphopeptide: human IKB alpha around the phosphorylation site of Ser32

Antigen Species: human

Uniprot ID: P25963

Synonyms: NFKBIA (p-S32);p-NFKBIA (S32);NFKBIA (p-Ser32);p-NFKBIA (Ser32)

Research Background

On the basis of both functional and structural considerations, members of the I κ B family of proteins can be divided into four groups. The first of these groups, I κ B- α , includes the avian protein pp40 and the mammalian MAD-3, both of which inhibit binding of p50-p65 NF κ B complex or Rel protein to their cognate binding sites but do not inhibit the binding of p50 homodimer to κ B sites, suggesting that the I κ B- α family binds to the p65 subunit of p50-p65 heterocomplex through ankyrin repeats. The second member of the I κ B family is represented by a protein designated I κ B- β . The third group of I κ B proteins is represented by I κ B- γ , which is identical in sequence with the C-terminal domain of the p110 precursor of NF κ B p50 and is expressed predominantly in lymphoid cells. An additional I κ B family member, I κ B- ϵ , has several phosphorylated forms and is primarily found complexed with Rel A and/or c-Rel.

Inhibitor · Natural Compounds · Compound Libraries · Recombinant Proteins

This product is for Research Use Only · Not for Human or Veterinary or Therapeutic Use

Tel:781-999-4286 E_mail:info@targetmol.com Address:34 Washington Street,Wellesley Hills,MA 02481