

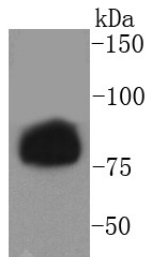
## Anti-Phospho-Hormone sensitive lipase (Ser853) Antibody (4W954)

## Product Details

Ig Type:	IgG
Reactivity:	Human,Mouse,Rat
Conjugation:	Unconjugated
Molecular Weight:	Theoretical: 84 kDa.
Clone:	4W954
Purification:	ProA affinity purified

## Applications

Verified Activity: 1. Western blot analysis of phospho-Hormone sensitive lipase (S853) on human skeletal muscle lysates using anti-phospho-Hormone sensitive lipase (S853) antibody at 1/1,000 dilution.



Application:	WB
Recommended	WB: 1:1000-5000

## Properties

Stability & Storage: Store at -20°C or -80°C for 12 months. Avoid repeated freeze-thaw cycles.  
Shipping: Shipping with blue ice.

## Antigen Details

Immunogen:	A synthesized phosphopeptide: human Hormone sensitive lipase around the phosphorylation site of Ser853
Antigen Species:	human
Uniprot ID:	Q05469
Synonyms:	p-Hormone sensitive lipase (S853);Hormone sensitive lipase (p-S853);p-Hormone sensitive lipase (Ser853);Hormone sensitive lipase (p-Ser853)

## Research Background

HSL (hormone-sensitive lipase), a cytosolic neutral lipase regulated by reversible phosphorylation, catalyzes the rate limiting step in triglyceride lipolysis. HSL hydrolyzes stored triglycerides to free fatty acids in adipose and heart tissues. In organs with steroidogenic tissues, such as small intestine, HSL converts cholesteryl esters to free cholesterol for steroid hormone production. HSL is highly expressed in jejunal enterocytes and in the mucosa of the small intestine. Two major isoforms of HSL have been described resulting from the use of alternative translational start codons. The short isoform is expressed in adipose tissue while the long isoform is expressed in steroidogenic

## A DRUG SCREENING EXPERT

---

tissues such as testis. The long isoform, often referred to as testicular HSL contains an N-terminus of approximately 300 amino acids not present in the short isoform of HSL.

**Inhibitor · Natural Compounds · Compound Libraries · Recombinant Proteins**

This product is for Research Use Only · Not for Human or Veterinary or Therapeutic Use

Tel:781-999-4286 E\_mail:info@targetmol.com Address:34 Washington Street,Wellesley Hills,MA 02481