

Anti-Phospho-ER alpha (Ser118) Antibody (5S971)

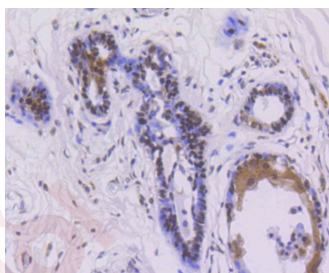
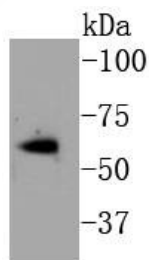
Product Details

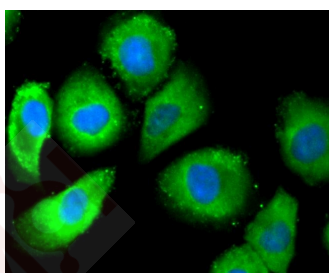
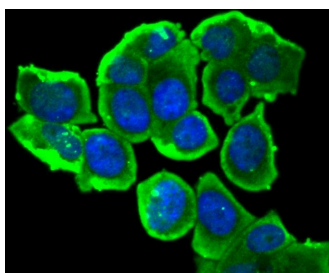
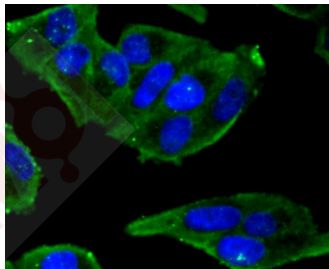
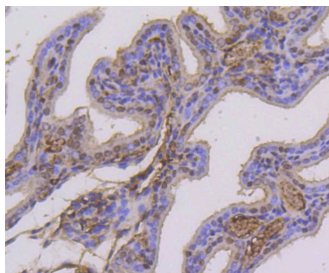
Ig Type:	IgG
Reactivity:	Human
Conjugation:	Unconjugated
Molecular Weight:	Theoretical: 66 kDa.
Clone:	5S971
Purification:	ProA affinity purified

Applications

Verified Activity:

1. Western blot analysis of Estrogen Receptor alpha (phospho S118) on MCF-7 cell lysates using anti-phospho-Estrogen Receptor alpha (S118) antibody at 1/1,000 dilution.
2. Immunohistochemical analysis of paraffin-embedded human breast carcinoma tissue using anti-phospho-Estrogen Receptor alpha (S118) antibody. Counter stained with hematoxylin.
3. Immunohistochemical analysis of paraffin-embedded mouse placenta tissue using anti-phospho-Estrogen Receptor alpha (S118) antibody. Counter stained with hematoxylin.
4. ICC staining phospho-Estrogen Receptor alpha (S118) in Hela cells (green). The nuclear counter stain is DAPI (blue). Cells were fixed in paraformaldehyde, permeabilised with 0.25% Triton X100/PBS.
5. ICC staining phospho-Estrogen Receptor alpha (S118) in MCF-7 cells (green). The nuclear counter stain is DAPI (blue). Cells were fixed in paraformaldehyde, permeabilised with 0.25% Triton X100/PBS.
6. ICC staining phospho-Estrogen Receptor alpha (S118) in HUVEC cells (green). The nuclear counter stain is DAPI (blue). Cells were fixed in paraformaldehyde, permeabilised with 0.25% Triton X100/PBS.





Application: ICC/IF,IHC,WB
Recommended WB: 1:1000; IHC: 1:50-200; ICC/IF: 1:50-200

Properties

Stability & Storage: Store at -20°C or -80°C for 12 months. Avoid repeated freeze-thaw cycles.

Shipping: Shipping with blue ice.

Antigen Details

Immunogen: A synthesized phosphopeptide: human Estrogen Receptor alpha around the phosphorylation site of Ser118
Antigen Species: human
Uniprot ID: P03372
Synonyms: p-ER alpha (Ser118);p-ER alpha (S118);ER alpha (p-Ser118);ER alpha (p-S118)

Research Background

Estrogen receptor alpha (ER α , ER, ESR, ESRA, Era, NR3A1, estrogen receptor 1) is a ligand-activated transcription factor composed of several domains important for hormone binding, DNA binding and activation of transcription. Alternative splicing results in several ER α mRNA transcripts, which differ primarily in their 5' untranslated regions.

A DRUG SCREENING EXPERT

ERa undergoes phosphorylation in response to estradiol binding. Human ERa is predominately phosphorylated on Ser 118 and to a lesser extent on Ser 104 and Ser 106. In response to activation of the mitogen-activated protein kinase pathway, phosphorylation occurs on Ser 118 and Ser 167. These serine residues are all located within the activation function 1 region of the N-terminal domain of ERa. In contrast, activation of protein kinase A increases the phosphorylation of Ser 236, which is located in the DNA-binding domain. Src kinase-dependent Tyr 537 phosphorylation may enhance estrogen binding to ERa. Mutation of Tyr 537 of the human ERa produces receptors having a range of constitutive activity.

Inhibitor · Natural Compounds · Compound Libraries · Recombinant Proteins

This product is for Research Use Only · Not for Human or Veterinary or Therapeutic Use

Tel:781-999-4286 E_mail:info@targetmol.com Address:34 Washington Street,Wellesley Hills,MA 02481