

Anti-Phospho-eIF4E (Ser209) Antibody (4B622)

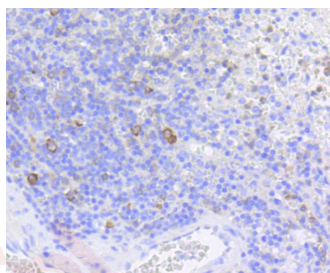
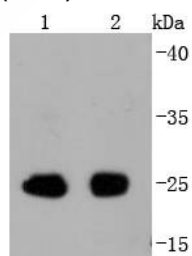
Product Details

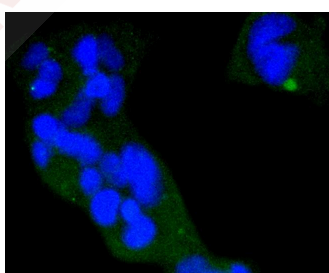
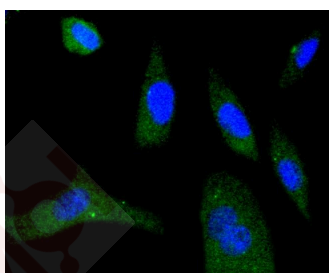
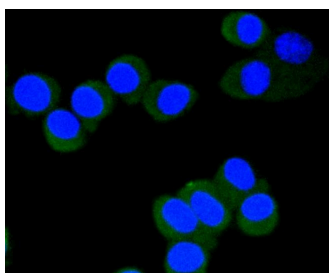
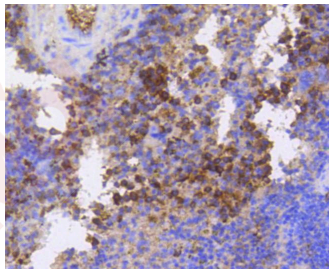
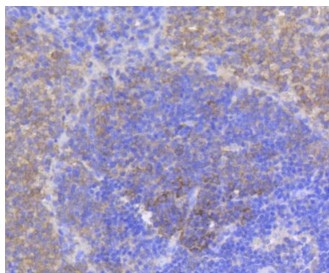
Ig Type:	IgG
Reactivity:	Human,Mouse,Rat
Conjugation:	Unconjugated
Molecular Weight:	Theoretical: 25 kDa.
Clone:	4B622
Purification:	ProA affinity purified

Applications

Verified Activity:

1. Western blot analysis of Phospho-eIF4E (S209) on different lysates using anti-Phospho-eIF4E (S209) antibody at 1/1,000 dilution. Positive control: Lane 1: Mouse spleen, Lane 2: Rat spleen.
2. Immunohistochemical analysis of paraffin-embedded human spleen tissue using anti-Phospho-eIF4E (S209) antibody. Counter stained with hematoxylin.
3. Immunohistochemical analysis of paraffin-embedded rat spleen tissue using anti-Phospho-eIF4E (S209) antibody. Counter stained with hematoxylin.
4. Immunohistochemical analysis of paraffin-embedded mouse spleen tissue using anti-Phospho-eIF4E (S209) antibody. Counter stained with hematoxylin.
5. ICC staining Phospho-eIF4E (S209) in N2A cells (green). The nuclear counter stain is DAPI (blue). Cells were fixed in paraformaldehyde, permeabilised with 0.25% Triton X100/PBS.
6. ICC staining Phospho-eIF4E (S209) in SH-SY-5Y cells (green). The nuclear counter stain is DAPI (blue). Cells were fixed in paraformaldehyde, permeabilised with 0.25% Triton X100/PBS.
7. ICC staining Phospho-eIF4E (S209) in 293 cells (green). The nuclear counter stain is DAPI (blue). Cells were fixed in paraformaldehyde, permeabilised with 0.25% Triton X100/PBS.





Application: ICC,IHC,IP,WB

Recommended WB: 1:1000-5000; IHC: 1:50-200; ICC: 1:50-200

Properties

Stability & Storage: Store at -20°C or -80°C for 12 months. Avoid repeated freeze-thaw cycles.

Shipping: Shipping with blue ice.

Antigen Details

Immunogen:	A synthesized phosphopeptide: human eIF4E around the phosphorylation site of Ser209
Antigen Species:	human
Uniprot ID:	P06730
Synonyms:	EIF4EL1;EIF4F;EIF4E (p-S209);AUTS19;EIF4E (p-Ser209);p-EIF4E (Ser209);Eukaryotic translation initiation factor 4 E;mRNA cap binding protein;EIF4E1;CBP;Eukaryotic translation initiation factor 4E like 1;p-EIF4E (S209);Eukaryotic translation initiation factor 4E;MGC111573;Messenger RNA Cap Binding Protein eIF 4E;Phospho-EIF4E (S209);eIF 4F 25 kDa subunit;EIF 4F;IF4E_HUMAN

Research Background

The initiation of protein synthesis in eukaryotic cells is regulated by interactions between protein initiation factors and RNA molecules. The eukaryotic initiation complex eIF4F exists in vitro as a trimeric complex of eIF4E, eIF4A and eIF4G. Together, the complex allows ribosome binding to mRNA by inducing the unwinding of mRNA secondary structures. eIF4E binds to the mRNA "cap" during an early step in the initiation of protein synthesis. eIF4A acts as an ATP-dependent RNA helicase. eIF4G acts as a bridge between eIF4E, eIF4A and the eIF3 complex.

Inhibitor · Natural Compounds · Compound Libraries · Recombinant Proteins

This product is for Research Use Only · Not for Human or Veterinary or Therapeutic Use

Tel:781-999-4286 E_mail:info@targetmol.com Address:34 Washington Street,Wellesley Hills,MA 02481