

Anti-Phospho-CREB1 (Ser133) Antibody (4I795)

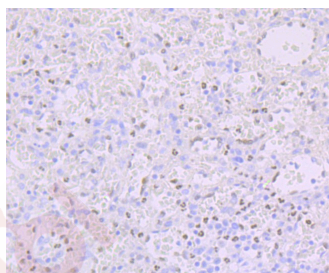
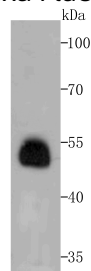
Product Details

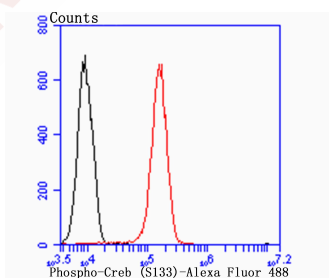
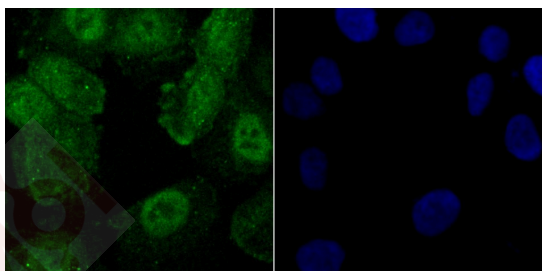
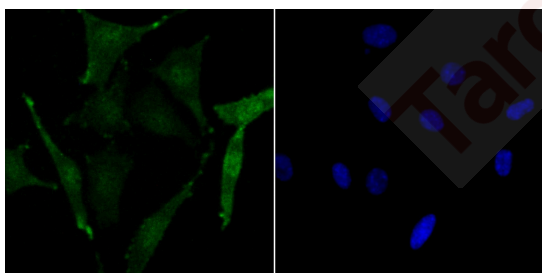
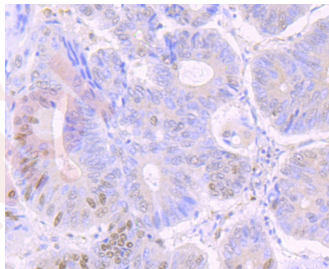
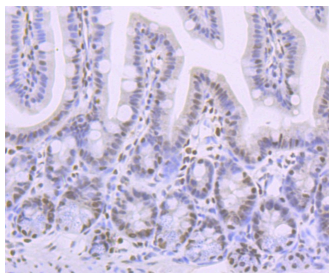
Ig Type:	IgG
Reactivity:	Human,Mouse
Conjugation:	Unconjugated
Molecular Weight:	Theoretical: 37 kDa.
Clone:	4I795
Purification:	ProA affinity purified

Applications

Verified Activity:

1. Western blot analysis of Phospho-Creb (S133) on human colon tissue lysates using anti-Phospho-Creb (S133) antibody at 1/500 dilution.
2. Immunohistochemical analysis of paraffin-embedded human spleen tissue using anti-Phospho-Creb (S133) antibody. Counter stained with hematoxylin.
3. Immunohistochemical analysis of paraffin-embedded mouse colon tissue using anti-Phospho-Creb (S133) antibody. Counter stained with hematoxylin.
4. Immunohistochemical analysis of paraffin-embedded human colon cancer tissue using anti-Phospho-Creb (S133) antibody. Counter stained with hematoxylin.
5. ICC staining Phospho-Creb (S133) in SH-SY-5Y cells (green). The nuclear counter stain is DAPI (blue). Cells were fixed in paraformaldehyde, permeabilised with 0.25% Triton X100/PBS.
6. ICC staining Phospho-Creb (S133) in HUVEC cells (green). The nuclear counter stain is DAPI (blue). Cells were fixed in paraformaldehyde, permeabilised with 0.25% Triton X100/PBS.
7. Flow cytometric analysis of HUVEC cells with Phospho-Creb (S133) antibody at 1/100 dilution (red) compared with an unlabelled control (cells without incubation with primary antibody; black). Alexa Fluor 488-conjugated goat anti rabbit IgG was used as the secondary antibody.





Application: FCM, ICC, IF, IHC, IP, WB

Recommended WB: 1:500-2000; IHC: 1:50-200; ICC: 1:50-100; IP: 1:10-50; FCM: 1:50-100

Properties

Stability & Storage: Store at -20°C or -80°C for 12 months. Avoid repeated freeze-thaw cycles.

Shipping: Shipping with blue ice.

Antigen Details

Immunogen: A synthesized phosphopeptide: human Creb around the phosphorylation site of Ser133
Antigen Species: human
Uniprot ID: P16220
Synonyms: p-CREB1 (S133);p-CREB1 (Ser133);CREB1 (p-Ser133);CREB1 (p-S133)

Research Background

Phosphorylation-dependent transcription factor that stimulates transcription upon binding to the DNA cAMP response element (CRE), a sequence present in many viral and cellular promoters. Transcription activation is enhanced by the TORC coactivators which act independently of Ser-133 phosphorylation. Involved in different cellular processes including the synchronization of circadian rhythmicity and the differentiation of adipose cells.

Inhibitor · Natural Compounds · Compound Libraries · Recombinant Proteins

This product is for Research Use Only· Not for Human or Veterinary or Therapeutic Use

Tel:781-999-4286 E_mail:info@targetmol.com Address:34 Washington Street,Wellesley Hills,MA 02481