

Anti-Phospho-CDK2 (Tyr15) Antibody (3L907)

Product Details

Ig Type:	IgG
Reactivity:	Human,Mouse,Rat
Conjugation:	Unconjugated
Molecular Weight:	Theoretical: 34 kDa.
Clone:	3L907
Purification:	ProA affinity purified

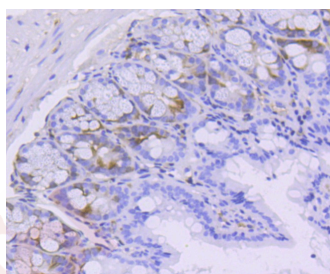
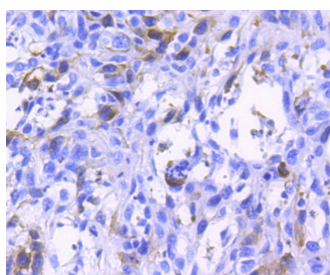
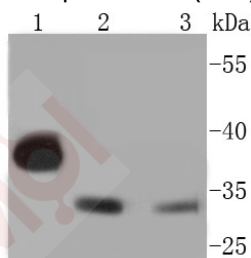
Applications

1. Western blot analysis of Phospho-Cdk2 (Y15) on different lysates using anti-Phospho-Cdk2 (Y15) antibody at 1/1,000 dilution. Positive control: Lane 1: Hela, Lane 2: Mouse spleen, Lane 3: NIH/3T3.

Verified Activity:

2. Immunohistochemical analysis of paraffin-embedded human breast carcinoma tissue using anti-Phospho-Cdk2 (Y15) antibody. Counter stained with hematoxylin.

3. Immunohistochemical analysis of paraffin-embedded mouse colon tissue using anti-Phospho-Cdk2 (Y15) antibody. Counter stained with hematoxylin.



Application: IHC,IP,WB

Recommended WB: 1:1000; IHC: 1:50-200

Properties

Stability & Storage: Store at -20°C or -80°C for 12 months. Avoid repeated freeze-thaw cycles.

Shipping: Shipping with blue ice.

Antigen Details

Immunogen: A synthesized phosphopeptide: human Cdk2 around the phosphorylation site of Tyr15

Antigen Species: human

Uniprot ID: P24941

Synonyms: p-CDK2 (Y15);p-CDK2 (Tyr15);CDK2 (p-Tyr15);CDK2 (p-Y15)

Research Background

In vertebrates, as in yeast, multiple cyclins have been identified, including a total of eight such regulatory proteins in mammals. In contrast to the situation in yeast, the Cdc2 p34 kinase is not the only catalytic subunit identified in vertebrates that can interact with cyclins. While Cdc2 p34 is essential for the G2 to M transition in vertebrate cells, a second Cdc2-related kinase has also been implicated in cell cycle control. This protein, designated cyclin-dependent kinase 2 (Cdk2) p33, also binds to cyclins and its kinase activity is temporally regulated during the cell cycle. Several additional Cdc2 p34-related cyclin dependent kinases have been identified. These include Cdk3-Cdk8, PCTAIRE-1-3 and KKIALLRE.

Inhibitor · Natural Compounds · Compound Libraries · Recombinant Proteins

This product is for Research Use Only · Not for Human or Veterinary or Therapeutic Use

Tel:781-999-4286 E_mail:info@targetmol.com Address:34 Washington Street,Wellesley Hills,MA 02481