

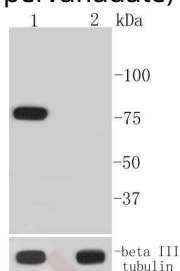
Anti-Phospho-BTK (Tyr223) Antibody (1E544)

Product Details

Ig Type:	IgG
Reactivity:	Human
Conjugation:	Unconjugated
Molecular Weight:	Theoretical: 76 kDa.
Clone:	1E544
Purification:	ProA affinity purified

Applications

Verified Activity: 1. Western blot analysis of Phospho-BTK (Y223) on different lysates using anti-Phospho-BTK (Y223) antibody at 1/1,000 dilution. Positive control: Lane 1: K562 cells treated with pervanadate, Lane 2: Untreated K562 cell lysate.



Application:	IP, WB
Recommended	WB: 1:1000-2000

Properties

Stability & Storage: Store at -20°C or -80°C for 12 months. Avoid repeated freeze-thaw cycles.
Shipping: Shipping with blue ice.

Antigen Details

Immunogen:	A synthesized phosphopeptide: human BTK around the phosphorylation site of Tyr223
Antigen Species:	human
Uniprot ID:	Q06187
Synonyms:	p-BTK (Tyr223); p-BTK (Y223); BTK (p-Tyr223); BTK (p-Y223)

Research Background

The Tec family of non-receptor tyrosine kinases is composed of six proteins designated Tec, Emt (also known as Itk or Tsk), Btk (previously known as Atk, BPK or Emb), Bmx, Txk (also known as Rlk) and Dsrc28C. All members of the family contain SH3 and SH2 domains and, with the exception of Txk and Dsrc28C, also contain a pleckstrin homology (PH) and a Tec homology (TH) domain in their amino termini. Four alternatively spliced forms of Tec are found to be expressed broadly in cells of hematopoietic lineage and hepatocytes. The Emt gene product associates with CD28 and becomes activated subsequent to CD28 ligation. Btk is necessary for proper B cell development, and mutations

A DRUG SCREENING EXPERT

in the gene encoding Btk have been associated with families suffering from X-linked agammaglobulinemia, also referred to as Bruton's disease. The Bmx protein shares a high degree of homology with Btk and seems to be expressed at highest levels in the heart. Txk expression is T cell-specific, while expression of the Drosophila Tec homolog, Dsrc28C, is developmentally regulated.

Inhibitor · Natural Compounds · Compound Libraries · Recombinant Proteins

This product is for Research Use Only · Not for Human or Veterinary or Therapeutic Use

Tel:781-999-4286 E_mail:info@targetmol.com Address:34 Washington Street,Wellesley Hills,MA 02481