

## Anti-Phospho-Alpha-Synuclein (Ser129) Antibody (7E158)

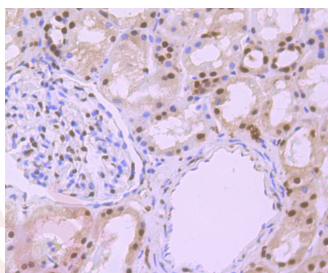
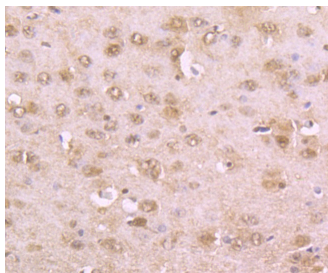
### Product Details

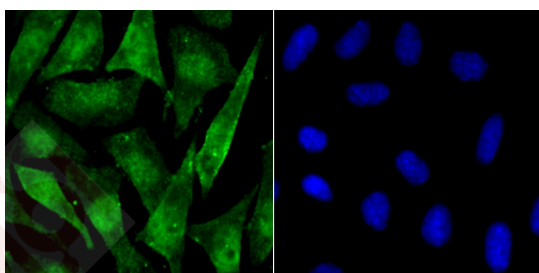
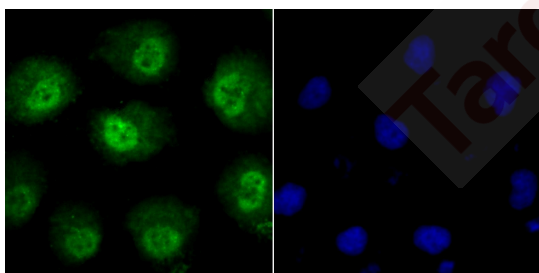
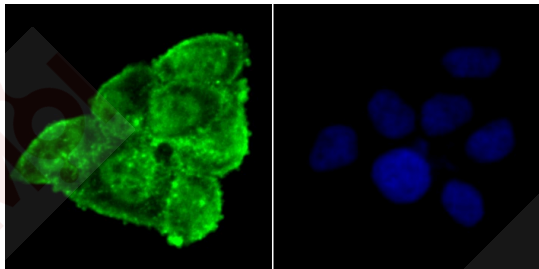
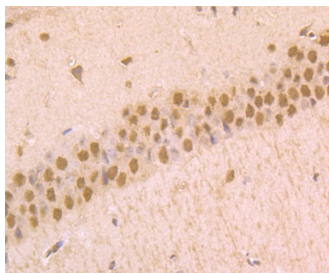
Ig Type:	IgG
Reactivity:	Human,Mouse,Rat
Conjugation:	Unconjugated
Molecular Weight:	Theoretical: 14 kDa.
Clone:	7E158
Purification:	ProA affinity purified

### Applications

#### Verified Activity:

1. Immunohistochemical analysis of paraffin-embedded rat brain tissue using anti-Phospho-alpha Synuclein (S129) antibody. Counter stained with hematoxylin.
2. Immunohistochemical analysis of paraffin-embedded human kidney tissue using anti-Phospho-alpha Synuclein (S129) antibody. Counter stained with hematoxylin.
3. Immunohistochemical analysis of paraffin-embedded mouse brain tissue using anti-Phospho-alpha Synuclein (S129) antibody. Counter stained with hematoxylin.
4. ICC staining Phospho-alpha Synuclein (S129) in Hela cells (green). The nuclear counter stain is DAPI (blue). Cells were fixed in paraformaldehyde, permeabilised with 0.25% Triton X100/PBS.
5. ICC staining Phospho-alpha Synuclein (S129) in HUVEC cells (green). The nuclear counter stain is DAPI (blue). Cells were fixed in paraformaldehyde, permeabilised with 0.25% Triton X100/PBS.
6. ICC staining Phospho-alpha Synuclein (S129) in SH-SY-5Y cells (green). The nuclear counter stain is DAPI (blue). Cells were fixed in paraformaldehyde, permeabilised with 0.25% Triton X100/PBS.





Application: ICC,IF,IHC,WB  
Recommended IHC: 1:50-200; ICC: 1:50-200

### Properties

Stability & Storage: Store at -20°C or -80°C for 12 months. Avoid repeated freeze-thaw cycles.

Shipping: Shipping with blue ice.

### Antigen Details

Immunogen: A synthesized phosphopeptide: human alpha Synuclein around the phosphorylation site of Ser129  
Antigen Species: human  
Uniprot ID: P37840  
Synonyms: p-Alpha-Synuclein (S129);Alpha-Synuclein (p-Ser129);Alpha-Synuclein (p-S129);p-Alpha-Synuclein (Ser129)

### Research Background

The synuclein family members, including  $\alpha$ -synuclein (also designated NACP for non- $\beta$ -Amyloid component) and  $\beta$ -synuclein, are predominantly expressed in the brain and are speculated to be involved in

## A DRUG SCREENING EXPERT

---

synaptic regulation and neuronal plasticity.  $\alpha$ -synuclein is localized to neuronal cell bodies and synapses.  $\alpha$ -synuclein was first identified as a component of Alzheimer's disease amyloid plaques. Abnormal platelet function in Alzheimer's disease has been demonstrated. During megakaryocytic differentiation  $\alpha$ -synuclein has been found to be upregulated, while  $\beta$ -synuclein is downregulated, indicating that coordinate expression of synucleins may be important during hematopoietic cell differentiation. A mutant form of  $\alpha$ -synuclein has been found in patients with early onset Parkinson's disease.

**Inhibitor · Natural Compounds · Compound Libraries · Recombinant Proteins**

This product is for Research Use Only · Not for Human or Veterinary or Therapeutic Use

Tel:781-999-4286 E\_mail:info@targetmol.com Address:34 Washington Street,Wellesley Hills,MA 02481