

Anti-UCHL1 Antibody (8X527)

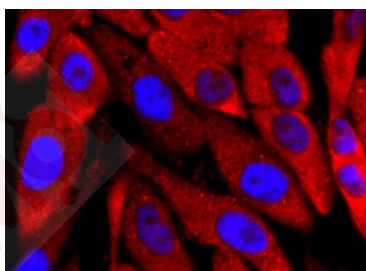
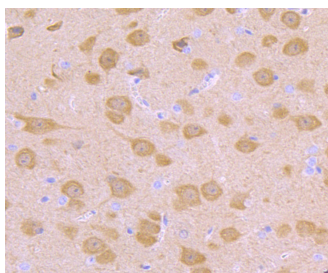
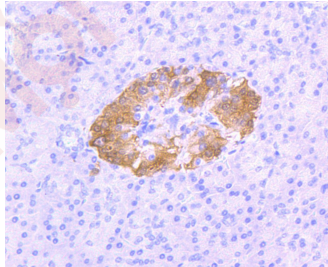
Product Details

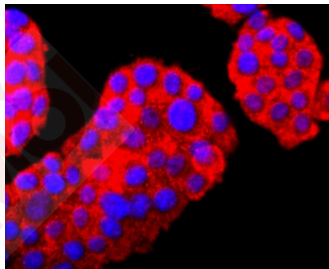
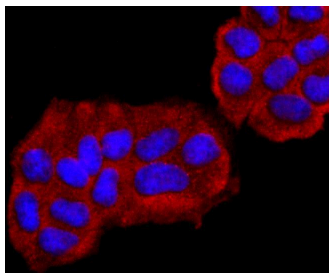
Ig Type:	IgG
Reactivity:	Human,Mouse,Rat
Conjugation:	Unconjugated
Molecular Weight:	Theoretical: 25 kDa.
Clone:	8X527
Purification:	ProA affinity purified

Applications

Verified Activity:

1. Immunohistochemical analysis of paraffin-embedded human pancreas tissue using anti-PGP9.5 antibody. Counter stained with hematoxylin.
2. Immunohistochemical analysis of paraffin-embedded mouse brain tissue using anti-PGP9.5 antibody. Counter stained with hematoxylin.
3. ICC staining PGP9.5 in PC-3M cells (red). The nuclear counter stain is DAPI (blue). Cells were fixed in paraformaldehyde, permeabilised with 0.25% Triton X100/PBS.
4. ICC staining PGP9.5 in Hela cells (red). The nuclear counter stain is DAPI (blue). Cells were fixed in paraformaldehyde, permeabilised with 0.25% Triton X100/PBS.
5. ICC staining PGP9.5 in PC-12 cells (red). The nuclear counter stain is DAPI (blue). Cells were fixed in paraformaldehyde, permeabilised with 0.25% Triton X100/PBS.





Application: ICC/IF,IHC,IP,WB

Recommended WB: 1:500-1000; IHC: 1:50-200; ICC/IF: 1:100-500; IP: 1:50-100

Properties

Stability & Storage: Store at -20°C or -80°C for 12 months. Avoid repeated freeze-thaw cycles.

Shipping: Shipping with blue ice.

Antigen Details

Immunogen: Recombinant Protein

Uniprot ID: P09936

Synonyms: Uch-L1;PGP95;PARK5;PGP9.5;NDGOA;ubiquitin carboxyl-terminal esterase L1 (ubiquitin thiolesterase);HEL-117

Research Background

UCH-L1 (ubiquitin C-terminal hydrolase) is a member of a gene family whose products hydrolyze small C-terminal adducts of ubiquitin to generate the ubiquitin monomer. Expression of UCH-L1 is highly specific to neurons and to cells of the diffuse neuroendocrine system and their tumors. UCH-L1 is expressed in brain neurons. Examination of specific brain regions reveals expression in all areas tested, particularly in the substantia nigra. UCH-L1 represents 1-2% of total soluble brain protein. Its occurrence in Lewy bodies and its function in the proteasome pathway make it a compelling candidate gene in Parkinson disease. The gene which encodes UCH-L1 maps to human chromosome 4p13. The 230 amino acid human UCH-L3 protein is 54% identical to that of UCH-L1. UCH-L3 is the predominant thiol protease and has high-affinity binding sites for ubiquitin.

Inhibitor · Natural Compounds · Compound Libraries · Recombinant Proteins

This product is for Research Use Only · Not for Human or Veterinary or Therapeutic Use

Tel:781-999-4286 E_mail:info@targetmol.com Address:34 Washington Street,Wellesley Hills,MA 02481