

Anti-PGP Antibody (7X310)

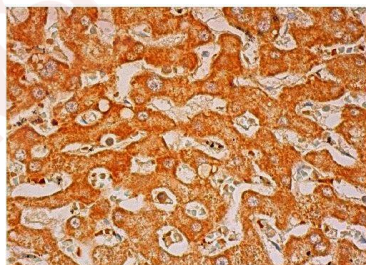
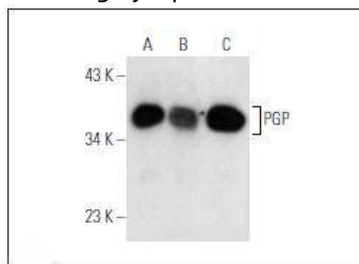
Product Details

Reactivity:	Human,Mouse,Rat
Conjugation:	Unconjugated
Molecular Weight:	Theoretical: 34 kDa.
Clone:	7X310
Purification:	ProA affinity purified

Applications

Verified Activity:

1. Western blot analysis of PGP expression in human heart (A) and human skeletal muscle (B) tissue extracts and K-562 whole cell lysate (C).
2. Immunoperoxidase staining of formalin fixed, paraffin-embedded human liver tissue showing cytoplasmic staining of hepatocytes.



Application: IF,IHC-P,IP,WB

Recommended WB: 1:100-1000; IHC-P: 1:50-500; IP: 1-2 µg per 100-500 µg of total protein(1 ml of cell lysate)

Properties

Stability & Storage: Store at 2°C-8°C for 12 months, do not freeze.

Shipping: Shipping with blue ice.

Antigen Details

Immunogen: Peptide
Uniprot ID: A6NDG6
Synonyms: Phosphoglycolate phosphatase;PGPase;PGP;PGP_HUMAN

Research Background

PGP (phosphoglycolate phosphatase), also known as PGPase, is a 321 amino acid enzyme belonging to the HAD-like hydrolase superfamily and the CbbY/cbbZ/gph/yieH family. PGP is detected in all tissues including red cells, lymphocytes and cultured fibroblasts, with highest activity found in skeletal and cardiac muscle. PGP is considered an important regulatory enzyme on oxygen transport by indirectly affecting the level of red cell 2,3-diphosphoglycerate. The gene encoding PGP maps to human chromosome 16, which encodes over 900 genes and comprises nearly 3% of the human genome. The GAN gene is located on chromosome 16 and, with mutation, may lead to giant axonal neuropathy, a nervous system disorder characterized by increasing malfunction with growth. The rare disorder Rubinstein-Taybi syndrome is also associated with chromosome 16, as is Crohn's disease, which is a gastrointestinal inflammatory condition.

Inhibitor · Natural Compounds · Compound Libraries · Recombinant Proteins

This product is for Research Use Only · Not for Human or Veterinary or Therapeutic Use

Tel:781-999-4286 E_mail:info@targetmol.com Address:34 Washington Street,Wellesley Hills,MA 02481