

Anti-PGK1 Antibody (1H456)

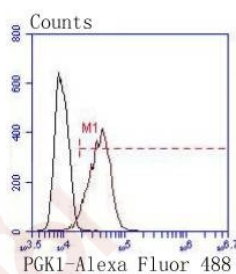
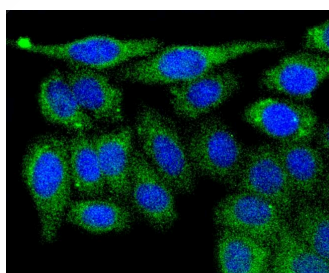
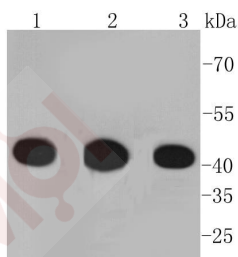
Product Details

Ig Type:	IgG
Reactivity:	Human,Mouse,Rat
Conjugation:	Unconjugated
Molecular Weight:	Theoretical: 45 kDa.
Clone:	1H456
Purification:	ProA affinity purified

Applications

Verified Activity:

1. Western blot analysis of PGK1 on different lysates using anti-PGK1 antibody at 1/1,000 dilution. Positive control: Lane 1: HeLa, Lane 2: HepG2, Lane 3: MCF-7.
2. ICC staining PGK1 in HepG2 cells (green). The nuclear counter stain is DAPI (blue). Cells were fixed in paraformaldehyde, permeabilised with 0.25% Triton X100/PBS.
3. Flow cytometric analysis of HeLa cells with PGK1 antibody at 1/50 dilution (red) compared with an unlabelled control (cells without incubation with primary antibody; black). Alexa Fluor 488-conjugated goat anti rabbit IgG was used as the secondary antibody.



Application:	FCM,ICC/IF,IP,WB
Recommended	WB: 1:1000-5000; ICC/IF: 1:50-200; FCM: 1:50-100

Properties

Stability & Storage: Store at -20°C or -80°C for 12 months. Avoid repeated freeze-thaw cycles.

Shipping: Shipping with blue ice.

Antigen Details

Immunogen: Recombinant Protein

Uniprot ID: P00558

Synonyms: PGK1;Phosphoglycerate kinase 1;Primer recognition protein 2;Cell migration-inducing gene 10 protein;PGKA

Research Background

Phosphoglycerate kinases 1/2 (PGK1/2, ATP:3-phospho-D-glycerate 1-phosphotransferase, EC 2.7.2.3) are somatically expressed, glycolytic enzymes that catalyze the transfer of a phosphoryl group from the acyl phosphate of 1,3-bisphosphoglycerate to ADP, thereby forming ATP and 3-phosphoglycerate. The human PGK gene is interrupted by 10 introns and spans 23 kilobases, and is X chromosome-linked at position Xq21.1, a region implicated in prostate cancer, androgen insensitivity, perineal hypospadias, and other genetic abnormalities. In addition to influencing glycolysis, the PGK1 is secreted by tumor cells and contributes to proliferative angiogenic processes as a disulfide reductase. PGK1 mediated reduction of disulphide bonds in the serine proteinase plasmin initiates the release of the tumor blood vessel inhibitor angiostatin, an event that is critical for blood vessel formation or angiogenesis in tumor expansion and metastasis.

Inhibitor · Natural Compounds · Compound Libraries · Recombinant Proteins

This product is for Research Use Only · Not for Human or Veterinary or Therapeutic Use

Tel:781-999-4286 E_mail:info@targetmol.com Address:34 Washington Street,Wellesley Hills,MA 02481