

Anti-Phospho-PFKFB2 (Ser483) Polyclonal Antibody

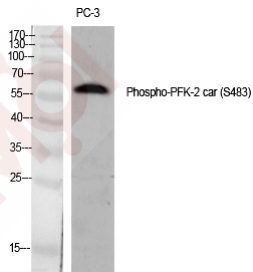
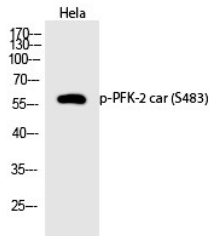
Product Details

Ig Type:	IgG
Reactivity:	Human,Mouse,Rat
Conjugation:	Unconjugated
Molecular Weight:	Actual: 58 kDa.
Purification:	The antibody was affinity-purified from rabbit antiserum by affinity-chromatography using epitope-specific immunogen.

Applications

Verified Activity:

1. Western Blot analysis of HeLa cells using Phospho-PFK-2 car (S483) Polyclonal Antibody.
2. Western Blot analysis of PC3 cells using Phospho-PFK-2 car (S483) Polyclonal Antibody.



Application:	ELISA,IHC,WB
Recommended	WB: 1:500-2000; IHC: 1:100-300; ELISA: 1:40000

Properties

Stability & Storage:	Store at -20°C or -80°C for 12 months. Avoid repeated freeze-thaw cycles.
Shipping:	Shipping with blue ice.

Antigen Details

Immunogen: A synthesized phosphopeptide: human PFK-2 car around the phosphorylation site of S483
Antigen Species: human
Uniprot ID: O60825
Synonyms: p-PFKFB2 (S483);p-PFKFB2 (Ser483);PFKFB2 (p-S483);PFKFB2 (p-Ser483)

Inhibitor · Natural Compounds · Compound Libraries · Recombinant Proteins

This product is for Research Use Only· Not for Human or Veterinary or Therapeutic Use

Tel:781-999-4286 E_mail:info@targetmol.com Address:34 Washington Street,Wellesley Hills,MA 02481