

Anti-Phospho-Period Circadian Protein 2 (Ser662) Polyclonal Antibody

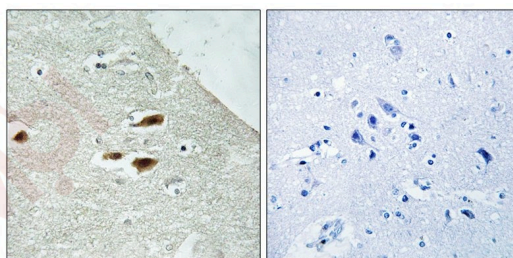
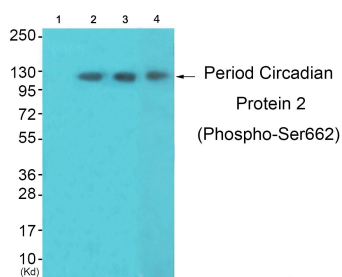
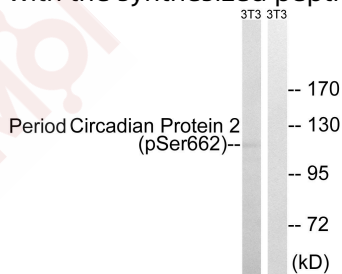
Product Details

Ig Type:	IgG
Reactivity:	Human,Mouse
Conjugation:	Unconjugated
Molecular Weight:	Actual: 120 kDa.
Purification:	Antibodies were produced by immunizing rabbits with synthetic phosphopeptide and KLH conjugates. Antibodies were purified by affinity-chromatography using epitope-specific phosphopeptide. Non-phospho specific antibodies were removed by chromatography using non-phosphopeptide.

Applications

Verified Activity:

1. Western blot analysis of extracts from 3T3 cells, treated with PMA (125ng/ml, 30mins), using Period Circadian Protein 2 (Phospho-Ser662) antibody TMAC-03158. The lane on the right is treated with the synthesized peptide.
2. Western blot analysis of extracts from 3T3, HeLa and K562 cells, using Period Circadian Protein 2 (Phospho-Ser662) Antibody TMAC-03158. The lane on the left is treated with synthesized peptide.
3. Immunohistochemistry analysis of paraffin-embedded human brain tissue using Period Circadian Protein 2 (Phospho-Ser662) antibody TMAC-03158. The picture on the right is treated with the synthesized peptide.



Application: IHC,WB

A DRUG SCREENING EXPERT

Recommended WB: 1:500-3000; IHC: 1:50-100

Properties

Stability & Storage: Store at -20°C or -80°C for 12 months. Avoid repeated freeze-thaw cycles.

Shipping: Shipping with blue ice.

Antigen Details

Immunogen: Peptide sequence around phosphorylation site of serine 662 (A-E-S(p)-V-A) derived from Human Period Circadian Protein 2

Antigen Species: human

Uniprot ID: O15055

Synonyms: p-Period Circadian Protein 2 (S662);Period Circadian Protein 2 (p-S662);Period Circadian Protein 2 (p-Ser662);p-Period Circadian Protein 2 (Ser662)

Research Background

Transcriptional repressor which forms a core component of the circadian clock. The circadian clock, an internal time-keeping system, regulates various physiological processes through the generation of approximately 24 hour circadian rhythms in gene expression, which are translated into rhythms in metabolism and behavior. It is derived from the Latin roots 'circa' (about) and 'diem' (day) and acts as an important regulator of a wide array of physiological functions including metabolism, sleep, body temperature, blood pressure, endocrine, immune, cardiovascular, and renal function. Consists of two major components: the central clock, residing in the suprachiasmatic nucleus (SCN) of the brain, and the peripheral clocks that are present in nearly every tissue and organ system. Both the central and peripheral clocks can be reset by environmental cues, also known as Zeitgebers (German for 'timegivers').

Inhibitor · Natural Compounds · Compound Libraries · Recombinant Proteins

This product is for Research Use Only · Not for Human or Veterinary or Therapeutic Use

Tel:781-999-4286 E_mail:info@targetmol.com Address:34 Washington Street,Wellesley Hills,MA 02481