

## Anti-Perilipin A Antibody (2U427)

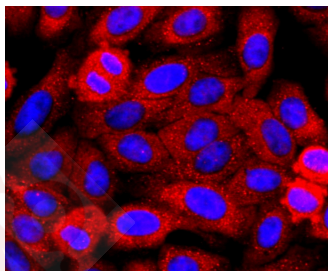
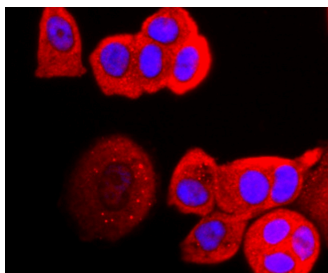
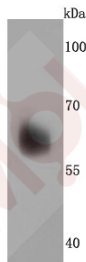
### Product Details

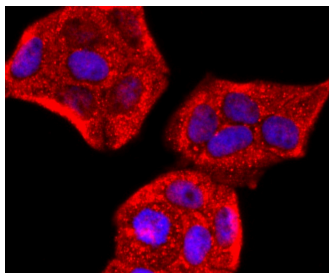
Ig Type:	IgG
Reactivity:	Human,Mouse
Conjugation:	Unconjugated
Molecular Weight:	Theoretical: 56 kDa.
Clone:	2U427
Purification:	ProA affinity purified

### Applications

#### Verified Activity:

1. Western blot analysis of Perilipin A on human liver cells lysates using anti-Perilipin A antibody at 1/500 dilution.
2. ICC staining Perilipin A in MCF-7 cells (red). The nuclear counter stain is DAPI (blue). Cells were fixed in paraformaldehyde, permeabilised with 0.25% Triton X100/PBS.
3. ICC staining Perilipin A in HepG2 cells (red). The nuclear counter stain is DAPI (blue). Cells were fixed in paraformaldehyde, permeabilised with 0.25% Triton X100/PBS.
4. ICC staining Perilipin A in Hela cells (red). The nuclear counter stain is DAPI (blue). Cells were fixed in paraformaldehyde, permeabilised with 0.25% Triton X100/PBS.





Application: ICC/IF,WB

Recommended WB: 1:1000-5000; ICC/IF: 1:100-500

---

#### Properties

Stability & Storage: Store at -20°C or -80°C for 12 months. Avoid repeated freeze-thaw cycles.

Shipping: Shipping with blue ice.

---

#### Antigen Details

Immunogen: Recombinant Protein

Uniprot ID: O60240

Synonyms: Lipid droplet associated protein;Perilipin-A;PLIN1;PLIN;Perilipin;Perilipin1;PERI;PerilipinA;Perilipin 1;PLIN 1

---

#### Research Background

Modulator of adipocyte lipid metabolism. Coats lipid storage droplets to protect them from breakdown by hormone-sensitive lipase (HSL). Its absence may result in leanness. Plays a role in unilocular lipid droplet formation by activating CIDEC. Their interaction promotes lipid droplet enlargement and directional net neutral lipid transfer. May modulate lipolysis and triglyceride levels.

**Inhibitor · Natural Compounds · Compound Libraries · Recombinant Proteins**

This product is for Research Use Only · Not for Human or Veterinary or Therapeutic Use

Tel:781-999-4286 E\_mail:info@targetmol.com Address:34 Washington Street,Wellesley Hills,MA 02481

---