

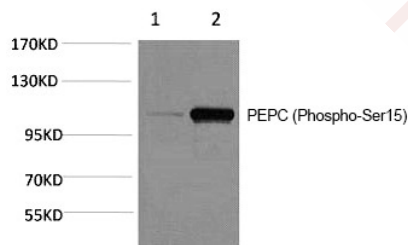
## Anti-Phospho-Pepsinogen C/PGC (Ser15) Polyclonal Antibody

## Product Details

Ig Type:	IgG
Reactivity:	Plant
Conjugation:	Unconjugated
Molecular Weight:	Actual: 105-110 kDa.
Purification:	The antibody was affinity-purified from antiserum by affinity-chromatography

## Applications

Verified Activity: 1. Western blot analysis of Maize 1) Dark, 2) Light, diluted at 1:2000.



Application:	WB
Recommended	WB: 1:1000-2000

## Properties

Stability & Storage:	Store at -20°C or -80°C for 12 months. Avoid repeated freeze-thaw cycles.
Shipping:	Shipping with blue ice.

## Antigen Details

Immunogen:	Phospho peptide at Ser15 of PEPC
Uniprot ID:	P20142
Synonyms:	p-Pepsinogen C/PGC (S15);Pepsinogen C/PGC (p-S15);Pepsinogen C/PGC (p-Ser15);p-Pepsinogen C/PGC (Ser15)

**Inhibitor · Natural Compounds · Compound Libraries · Recombinant Proteins**

This product is for Research Use Only. Not for Human or Veterinary or Therapeutic Use

Tel:781-999-4286 E\_mail:info@targetmol.com Address:34 Washington Street,Wellesley Hills,MA 02481