

Anti-PDX1 Antibody (2P581)

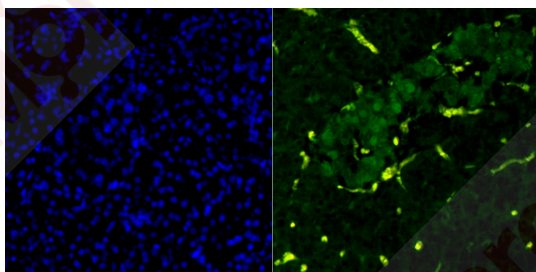
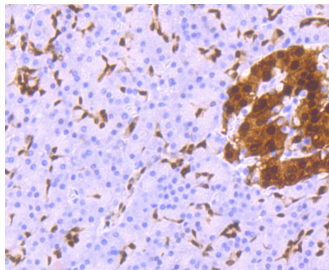
Product Details

Ig Type:	IgG
Reactivity:	Human
Conjugation:	Unconjugated
Clone:	2P581
Purification:	ProA affinity purified

Applications

Verified Activity:

1. Immunohistochemical analysis of paraffin-embedded human pancreas tissue using anti-PDX1 antibody. Counter stained with hematoxylin.
2. IF analysis of paraffin-embedded human pancreas tissue using anti-PDX1 antibody (green). The nuclear counter stain is DAPI (blue).



Application:	ICC/IF,IHC,WB
Recommended	IHC: 1:50-200; ICC/IF: 1:50-200

Properties

Stability & Storage:	Store at -20°C or -80°C for 12 months. Avoid repeated freeze-thaw cycles.
Shipping:	Shipping with blue ice.

Antigen Details

Immunogen:	Recombinant Protein
Uniprot ID:	P52945
Synonyms:	IPF 1;PDX1_HUMAN;STF1;Somatostatin-transactivating factor 1;Somatostatin transactivating factor 1;IUF-1;Glucose sensitive factor;Islet/duodenum homeobox 1;STF 1;IDX1;MODY4;STF-1;Glucose-sensitive factor;Pancreas/duodenum homeobox 1;IDX-1;GSF;Insulin promoter factor 1 homeodomain transcription factor;pancreatic and duodenal homeobox P;Islet/duodenum homeobox-1;Insulin upstream factor 1;IPF-1;IUF1;IDX 1;PDX 1;IPF1;Insulin promoter factor 1; IUF 1;Pancreas/duodenum homeobox protein 1

Research Background

Activates insulin, somatostatin, glucokinase, islet amyloid polypeptide and glucose transporter type 2 gene transcription. Particularly involved in glucose-dependent regulation of insulin gene transcription. Binds preferentially the DNA motif 5'-[CT]TAAT[TG]-3'. During development, specifies the early pancreatic epithelium, permitting its proliferation, branching and subsequent differentiation. At adult stage, required for maintaining the hormone-producing phenotype of the beta-cell.

Inhibitor · Natural Compounds · Compound Libraries · Recombinant Proteins

This product is for Research Use Only · Not for Human or Veterinary or Therapeutic Use

Tel:781-999-4286 E_mail:info@targetmol.com Address:34 Washington Street,Wellesley Hills,MA 02481