

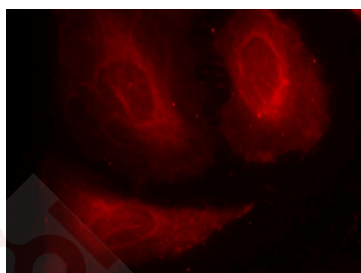
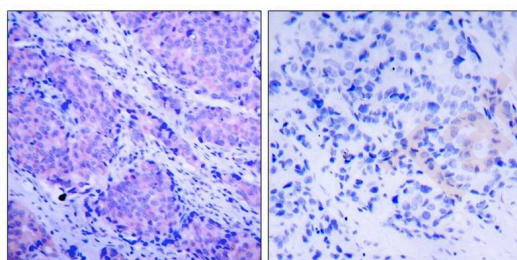
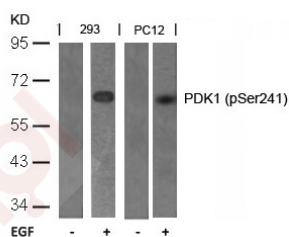
## Anti-Phospho-PDK1 (Ser241) Polyclonal Antibody

### Product Details

Ig Type:	IgG
Reactivity:	Human,Mouse,Rat
Conjugation:	Unconjugated
Purification:	Antibodies were produced by immunizing rabbits with synthetic phosphopeptide and KLH conjugates. Antibodies were purified by affinity-chromatography using epitope-specific phosphopeptide. Non-phospho specific antibodies were removed by chromatography using non-phosphopeptide.

### Applications

- Verified Activity:
1. Western blot analysis of extracts from 293 and PC12 cells untreated or treated with EGF using PDK1 (Phospho-Ser241) Antibody TMAC-03139.
  2. Immunohistochemical analysis of paraffin-embedded human breast carcinoma tissue using PDK1(Phospho-Ser241) Antibody TMAC-03139 (left) or the same antibody preincubated with blocking peptide (right).
  3. Immunofluorescence staining of methanol-fixed Hela cells using PDK1 (Phospho-Ser241) Antibody TMAC-03139.



Application: IF,IHC,WB

## A DRUG SCREENING EXPERT

---

### Properties

Stability & Storage: Store at 2°C-8°C for 1 month. Store at -20°C or -80°C for 12 months. Avoid repeated freeze-thaw cycles.

Shipping: Shipping with blue ice.

---

### Antigen Details

Immunogen: Peptide sequence around phosphorylation site of serine 241 (A-N-S(p)-F-V) derived from Human PDK1

Antigen Species: human

Uniprot ID: O15530

Synonyms: p-PDK1 (S241);PDK1 (p-S241);p-PDK1 (Ser241);PDK1 (p-Ser241)

---

### Research Background

Phosphorylates and activates not only PKB/AKT, but also PKA, PKC-zeta, RPS6KA1 and RPS6KB1. May play a general role in signaling processes and in development.

**Inhibitor · Natural Compounds · Compound Libraries · Recombinant Proteins**

This product is for Research Use Only. Not for Human or Veterinary or Therapeutic Use

Tel:781-999-4286 E\_mail:info@targetmol.com Address:34 Washington Street,Wellesley Hills,MA 02481