

## Anti-PDIA6 Antibody (6G49)

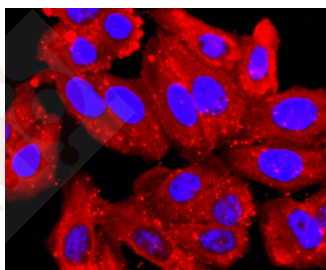
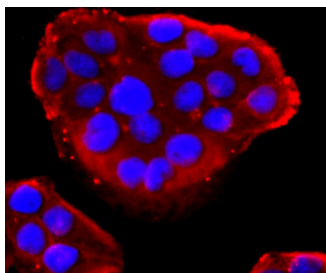
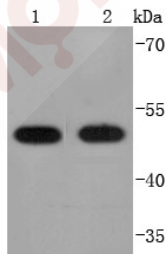
### Product Details

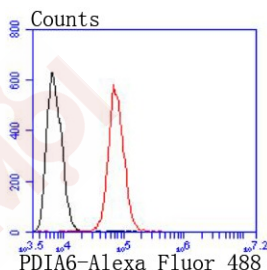
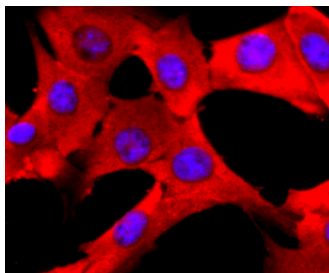
Ig Type:	IgG
Reactivity:	Human,Mouse,Rat
Conjugation:	Unconjugated
Molecular Weight:	Theoretical: 48 kDa.
Clone:	6G49
Purification:	ProA affinity purified

### Applications

#### Verified Activity:

1. Western blot analysis of PDIA6 on different lysates using anti-PDIA6 antibody at 1/1,000 dilution. Positive control: Lane 1: HepG2, Lane 2: K562.
2. ICC staining PDIA6 in Hela cells (red). The nuclear counter stain is DAPI (blue). Cells were fixed in paraformaldehyde, permeabilised with 0.25% Triton X100/PBS.
3. ICC staining PDIA6 in HepG2 cells (red). The nuclear counter stain is DAPI (blue). Cells were fixed in paraformaldehyde, permeabilised with 0.25% Triton X100/PBS.
4. ICC staining PDIA6 in NIH/3T3 cells (green). The nuclear counter stain is DAPI (blue). Cells were fixed in paraformaldehyde, permeabilised with 0.25% Triton X100/PBS.
5. Flow cytometric analysis of Hela cells with PDIA6 antibody at 1/50 dilution (red) compared with an unlabelled control (cells without incubation with primary antibody; black). Alexa Fluor 488-conjugated goat anti rabbit IgG was used as the secondary antibody.





Application: FCM, ICC/IF, WB

Recommended WB: 1:1000-2000; ICC/IF: 1:100-500; FCM: 1:50-100

### Properties

Stability & Storage: Store at -20°C or -80°C for 12 months. Avoid repeated freeze-thaw cycles.

Shipping: Shipping with blue ice.

### Antigen Details

Immunogen: Recombinant Protein

Uniprot ID: Q15084

Synonyms: Protein Disulfide Isomerase P5; ER Protein 5; PDIA6; ERP5; TXNDC7; Endoplasmic Reticulum Protein 5; Thioredoxin Domain-Containing Protein 7; Protein Disulfide-Isomerase A6; P5

### Research Background

Endoplasmic reticulum proteins (ERPs) are widely expressed proteins that localize to the ER and may act as proteases, protein disulfide isomerases, thiol-disulfide oxidases or phospholipases. ERp5, also known as PDIA6 (protein disulfide isomerase family A, member 6) or TXNDC7 is a 440 amino acid protein that contains two thioredoxin domains and belongs to the protein disulfide isomerase family. Localized to the melanosome, as well as to the lumen of the endoplasmic reticulum, ERp5 functions to catalyze the rearrangement of disulfide bonds in a variety of different proteins. Via its catalytic activity, ERp5 is able to reduce the disulfide bond that binds MICA to tumor cells, thereby releasing MICA and reducing the rate of tumor expansion. Multiple isoforms of ERp5 exist due to alternative splicing events.

**Inhibitor · Natural Compounds · Compound Libraries · Recombinant Proteins**

This product is for Research Use Only · Not for Human or Veterinary or Therapeutic Use

Tel: 781-999-4286 E\_mail: info@targetmol.com Address: 34 Washington Street, Wellesley Hills, MA 02481