

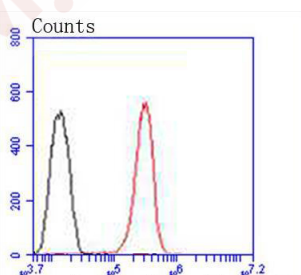
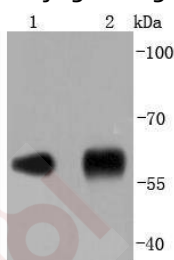
Anti-P4HB Antibody (9K753)

Product Details

Ig Type:	IgG
Reactivity:	Human,Mouse,Rat
Conjugation:	Unconjugated
Molecular Weight:	Theoretical: 58 kDa.
Clone:	9K753
Purification:	ProA affinity purified

Applications

1. Western blot analysis of PDI on different lysates using anti-PDI antibody at 1/1,000 dilution. Positive control: Lane 1: NIH/3T3, Lane 2: Human liver.
2. Flow cytometric analysis of Hela cells with PDI antibody at 1/50 dilution (red) compared with an unlabelled control (cells without incubation with primary antibody; black). Alexa Fluor 488-conjugated goat anti rabbit IgG was used as the secondary antibody.



Application:	FCM,WB
Recommended	WB: 1:1000-2000; FCM: 1:50-100

Properties

- Stability & Storage: Store at -20°C or -80°C for 12 months. Avoid repeated freeze-thaw cycles.
- Shipping: Shipping with blue ice.

Antigen Details

Immunogen:	Recombinant Protein
Uniprot ID:	P07237
Synonyms:	prolyl 4-hydroxylase, beta polypeptide;DSI;ERBA2L;GIT;PHDB;PDI;PROHB;PDIA1;P4H β ;P4Hbeta;prolyl 4-hydroxylase, β polypeptide;PO4HB;PO4DB

Research Background

Oxidoreductase-protein disulfide isomerase (PDI) is a homodimer consisting of subunits that catalyzes thiol-disulfide exchange, mediates folding of newly synthesized proteins and functions as a molecular chaperone. PDI localizes to the lumen of the endoplasmic reticulum (ER), where in conjunction with folding-helper proteins, such as immunoglobulin heavy chain binding protein (BiP), mediates tertiary and quaternary protein-processing. Cell surface PDI induces sulfhydryl-mediated conformational changes in integrin-mediated adhesion receptor-ligand interactions, thereby regulating integrin responses and cell adhesion. Additionally, PDI functions as a subunit of two more complex enzyme systems: the prolyl-4-hydroxylase and the triacylglycerol transfer proteins.

Inhibitor · Natural Compounds · Compound Libraries · Recombinant Proteins

This product is for Research Use Only · Not for Human or Veterinary or Therapeutic Use

Tel:781-999-4286 E_mail:info@targetmol.com Address:34 Washington Street,Wellesley Hills,MA 02481