

Anti-Phospho-PDGFRB (Y740) Antibody (11961)

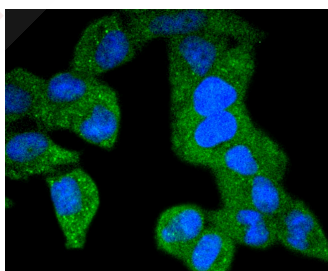
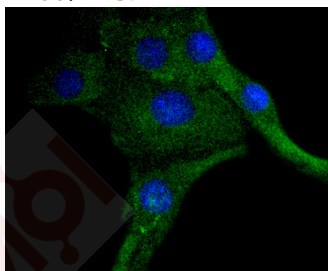
Product Details

Ig Type:	IgG
Reactivity:	Mouse,Rat
Conjugation:	Unconjugated
Molecular Weight:	Theoretical: 190 kDa.
Clone:	11961
Purification:	ProA affinity purified

Applications

Verified Activity:

1. ICC staining PDGF Receptor beta(phospho Y740) in C2C12 cells (green). The nuclear counter stain is DAPI (blue). Cells were fixed in paraformaldehyde, permeabilised with 0.25% Triton X100/PBS.
2. ICC staining PDGF Receptor beta(phospho Y740) in Hela cells (green). The nuclear counter stain is DAPI (blue). Cells were fixed in paraformaldehyde, permeabilised with 0.25% Triton X100/PBS.



Application:	ICC/IF,WB
Recommended	WB: 1:1000; ICC/IF: 1:50-200

Properties

Stability & Storage:	Store at -20°C or -80°C for 12 months. Avoid repeated freeze-thaw cycles.
Shipping:	Shipping with blue ice.

Antigen Details

Immunogen:	A synthesized phosphopeptide: human PDGF Receptor beta around the phosphorylation site of Tyr740
Antigen Species:	human
Uniprot ID:	P05622
Synonyms:	p-PDGFRB (Y740);PDGFRB (p-Y740)

Research Background

Platelet Derived Growth Factor (PDGF) is a mitogen for mesenchyme- and glia-derived cells. PDGF consists of two chains, A and B, which dimerize to form functionally distinct isoforms, PDGF-AA, PDGF-AB, and PDGF-BB. These three isoforms bind with different affinities to two receptor types, a and b, which are endowed with protein tyrosine kinase domains and undergo either homo- or heterodimerization as a consequence of ligand binding. Ligand stimulation of PDGFR-b leads to autophosphorylation at Tyr-857, which is the major autophosphorylation site, and Tyr-751, which is the major in vitro phosphorylation site. Autophosphorylation of Tyr-751, which lies in the kinase insert region, is required for binding of phosphatidylinositol-3 kinase to the receptor. These auto-phosphorylation events largely contribute to signal transduction through the PDGF receptor.

Inhibitor · Natural Compounds · Compound Libraries · Recombinant Proteins

This product is for Research Use Only · Not for Human or Veterinary or Therapeutic Use

Tel:781-999-4286 E_mail:info@targetmol.com Address:34 Washington Street,Wellesley Hills,MA 02481