

## Anti-Acetyl-PCAF (Lys428) Polyclonal Antibody

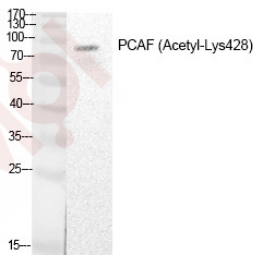
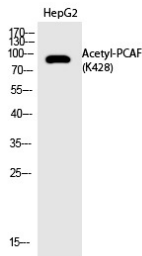
### Product Details

Ig Type:	IgG
Reactivity:	Human,Mouse
Conjugation:	Unconjugated
Molecular Weight:	Actual: 93 kDa.
Purification:	The antibody was affinity-purified from rabbit antiserum by affinity-chromatography using epitope-specific immunogen.

### Applications

#### Verified Activity:

1. Western Blot analysis of HepG2 cells using Acetyl-PCAF (K428) Polyclonal Antibody.
2. Western Blot analysis of HepG2 cells using Acetyl-PCAF (K428) Polyclonal Antibody.



Application:	ELISA,WB
Recommended	WB: 1:500-2000; ELISA: 1:20000

### Properties

Stability & Storage:	Store at -20°C or -80°C for 12 months. Avoid repeated freeze-thaw cycles.
Shipping:	Shipping with blue ice.

Antigen Details

Immunogen: A synthesized acetylpeptide: human PCAF around the acetylation site of K428  
Antigen Species: human  
Synonyms: Ac-PCAF (Lys428);PCAFK428-acetylated;Acetyl-PCAF (K428);PCAFK428ac;Ac-PCAFK428;Ac-PCAF (K428)

**Inhibitor · Natural Compounds · Compound Libraries · Recombinant Proteins**

This product is for Research Use Only · Not for Human or Veterinary or Therapeutic Use

Tel:781-999-4286 E\_mail:info@targetmol.com Address:34 Washington Street,Wellesley Hills,MA 02481