

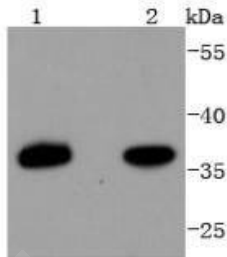
## Anti-PAX9 Antibody (8E64)

### Product Details

Ig Type:	IgG
Reactivity:	Human,Mouse,Rat
Conjugation:	Unconjugated
Molecular Weight:	Theoretical: 36 kDa.
Clone:	8E64
Purification:	ProA affinity purified

### Applications

Verified Activity: 1. Western blot analysis of PAX9 on different lysates using anti-PAX9 antibody at 1/1,000 dilution. Positive control: Lane 1: HepG2, Lane 2: Hela.



Application:	WB
Recommended	WB: 1:1000-2000

### Properties

Stability & Storage:	Store at -20°C or -80°C for 12 months. Avoid repeated freeze-thaw cycles.
Shipping:	Shipping with blue ice.

### Antigen Details

Immunogen:	Recombinant Protein
Uniprot ID:	P55771
Synonyms:	Paired box protein 9;PAX 9;Paired domain gene 9;Paired box gene 9;Paired box 9;Paired box protein Pax 9;PAX9_HUMAN;STHAG3;Paired box homeotic gene 9;Paired box protein Pax-9; Paired box protein Pax9

### Research Background

Pax genes contain paired domains with strong homology to genes in *Drosophila* which are involved in programming early development. Pax-9, a member of the paired box-containing gene family, is closely related in its paired domain to Pax-1. The Pax-9 gene encodes the highly conserved paired domain and the gene is a member of the same subgroup as Pax-1/undulated. Pax-9 is essential for the development of a variety of organs and skeletal elements. Mutations in either the Pax-1 or the Pax-9 genes may produce an inherited skeletal disorder such as the Jarcho-Levin syndrome or other forms of spondylocostal dysplasia, conditions resembling undulated in the mouse. A frameshift mutation within the paired domain of Pax-9 was identified in a family segregating autosomal

## A DRUG SCREENING EXPERT

---

dominant oligodontia whose members had normal primary dentition but lacked most permanent molars. In addition to lack of permanent molars, some individuals also lacked maxillary and/or mandibular second premolars, as well as mandibular central incisors. The gene which encodes Pax-9 maps to human chromosome 14q12-q13.

**Inhibitor · Natural Compounds · Compound Libraries · Recombinant Proteins**

This product is for Research Use Only · Not for Human or Veterinary or Therapeutic Use

Tel:781-999-4286 E\_mail:info@targetmol.com Address:34 Washington Street,Wellesley Hills,MA 02481