

Anti-PAX6 Antibody (9M633)

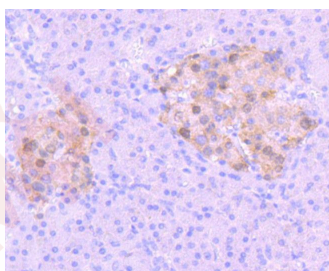
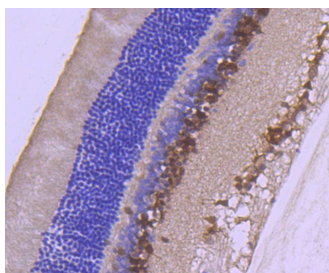
Product Details

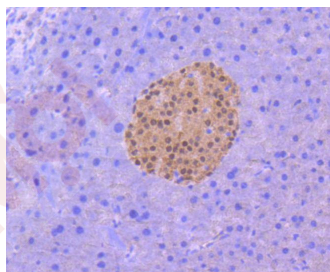
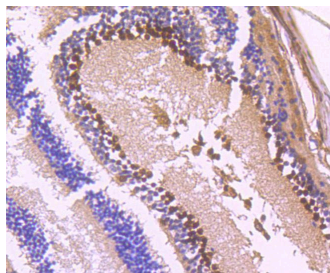
Ig Type:	IgG
Reactivity:	Human,Mouse,Rat
Conjugation:	Unconjugated
Molecular Weight:	Theoretical: 48 kDa.
Clone:	9M633
Purification:	ProA affinity purified

Applications

Verified Activity:

1. Western blot analysis of PAX6 on Hela cells lysates using anti-PAX6 antibody at 1/1,000 dilution.
2. Immunohistochemical analysis of paraffin-embedded rat eyeball tissue using anti-PAX6 antibody. Counter stained with hematoxylin.
3. Immunohistochemical analysis of paraffin-embedded human pancreas tissue using anti-PAX6 antibody. Counter stained with hematoxylin.
4. Immunohistochemical analysis of paraffin-embedded mouse eyeball tissue using anti-PAX6 antibody. Counter stained with hematoxylin.
5. Immunohistochemical analysis of paraffin-embedded mouse pancreas tissue using anti-PAX6 antibody. Counter stained with hematoxylin.





Application: ICC/IF,IHC,WB
Recommended WB: 1:1000; IHC: 1:50-200; ICC/IF: 1:50-200

Properties

Stability & Storage: Store at -20°C or -80°C for 12 months. Avoid repeated freeze-thaw cycles.
Shipping: Shipping with blue ice.

Antigen Details

Immunogen: Recombinant Protein
Uniprot ID: P26367
Synonyms: Aniridia type II protein; Paired box protein Pax-6; AN2; Oculorhombin; PAX 6

Research Background

Pax genes contain paired domains with strong homology to genes in *Drosophila* which are involved in programming early development. Lesions in the Pax-6 gene account for most cases of aniridia, a congenital malformation of the eye, chiefly characterized by iris hypoplasia, which can cause blindness. Pax-6 is involved in other anterior segment malformations besides aniridia, such as Peters anomaly, a major error in the embryonic development of the eye with corneal clouding with variable iridolenticulocorneal adhesions. The Pax-6 gene encodes a transcriptional regulator that recognizes target genes through its paired-type DNA-binding domain. The paired domain is composed of two distinct DNA-binding subdomains, the amino-terminal subdomain and the carboxy-terminal subdomain, which bind respective consensus DNA sequences. The human Pax-6 gene produces two alternatively spliced isoforms that have the distinct structure of the paired domain.

Inhibitor · Natural Compounds · Compound Libraries · Recombinant Proteins

This product is for Research Use Only · Not for Human or Veterinary or Therapeutic Use

Tel:781-999-4286 E_mail:info@targetmol.com Address:34 Washington Street,Wellesley Hills,MA 02481
