

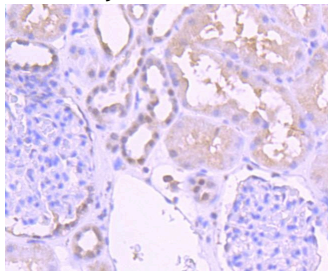
Anti-Pax2 Antibody (6X420)

Product Details

Ig Type:	IgG
Reactivity:	Human
Conjugation:	Unconjugated
Molecular Weight:	Theoretical: 45 kDa.
Clone:	6X420
Purification:	ProA affinity purified

Applications

Verified Activity: 1. Immunohistochemical analysis of paraffin-embedded human kidney tissue using anti-Pax2 antibody. Counter stained with hematoxylin.



Application:	IHC,WB
Recommended	WB: 1:1000; IHC: 1:50-100

Properties

Stability & Storage:	Store at -20°C or -80°C for 12 months. Avoid repeated freeze-thaw cycles.
Shipping:	Shipping with blue ice.

Antigen Details

Immunogen:	Recombinant Protein
Uniprot ID:	Q02962
Synonyms:	PAPRS;Paired box protein Pax 2;Paired box protein Pax-2;paired box homeotic gene 2;Pax 2; paired box protein 2;Paired box gene 2;Paired box protein Pax2;Paired box 2;FSGS7

Research Background

Pax genes contain paired domains with strong homology to genes in *Drosophila* which are involved in programming early development. The PAX2 gene is expressed in primitive cells of the kidney, ureter, eye, ear, and central nervous system. More specifically, in human embryo sections, PAX2 is expressed in the optic vesicle and later in the retina, in the otic vesicle and later in the semicircular canals of the inner ear, and in mesonephros, metanephros, adrenals, spinal cord, and hindbrain. PAX2 mutations can be responsible for renal hypoplasia, either isolated or associated with various ophthalmologic manifestations ranging from retinal coloboma to microphthalmia. Lesions in the PAX6 gene accounts for most cases of aniridia, a congenital malformation of the eye, chiefly characterized by iris hypoplasia, which can cause blindness. PAX6 is involved in other anterior segment malformations besides aniridia,

A DRUG SCREENING EXPERT

such as Peters anomaly, a major error in the embryonic development of the eye with corneal clouding with variable iridolenticulocorneal adhesions.

Inhibitor · Natural Compounds · Compound Libraries · Recombinant Proteins

This product is for Research Use Only · Not for Human or Veterinary or Therapeutic Use

Tel:781-999-4286 E_mail:info@targetmol.com Address:34 Washington Street,Wellesley Hills,MA 02481